



1954 Florida State  
BAND & ORCHESTRA FESTIVAL  
NORTHERN DIVISION

May 13, 14, 15

Tallahassee



# *Band Boosters Page . . . . .*

**We, the Following Firms and Individuals Welcome  
You to the Band Festival . . .**

**JUNIOR FASHIONS**  
108 East College Avenue

**BUDDY'S HARDWARE & SPORTING GOODS**  
203 South Monroe Street

**CHRISTO'S STORES, INC.**  
208 South Monroe Street

**BRINKLEY BROTHERS**  
Realtors—Insurance

**MIDYETTE-MOOR INSURANCE AGENCY**  
Midyette-Moor Building

**HARRY AND DICK MITCHELL**

**MOORE, HENDERSON AND BUFORD**  
Lewis State Bank Building

**DR. AND MRS. FRANCIS T. HOLLAND**

**DOUGLAS B. SHIVERS**  
127 East Park Avenue

**STATE BAKERY AND DELICATESSEN**  
Center Building

**MR. AND MRS. JULIAN ALFORD**

**BALLINGER, CAWTHON AND MADIGAN**  
Center Building

**MR. AND MRS. JULIUS PARKER**

**DR. AND MRS. R. H. MICKLER**

**DR. AND MRS. ODIS KENDRICK, JR.**

**JITNEY JUNGLE**

**THE BOYS CENTER**  
212 South Monroe Street

**PHILIPS REALTY COMPANY**  
209 South Monroe Street

**DeMILLY-YAEGER INSURANCE AGENCY**  
214 South Adams Street

**BAKER INSURANCE AGENCY**  
Grant Building

**HOOD INSURANCE AGENCY**  
D. L. (Buck) Hood, Owner

**JOHN E. HUNT INSURANCE AGENCY**  
311 North Monroe Street

**JESS PARKER INSURANCE AGENCY**  
Brock Building

**WILLIAMSON AND STEINMEYER**  
Realtors and Insurors

*Welcome . . . .*

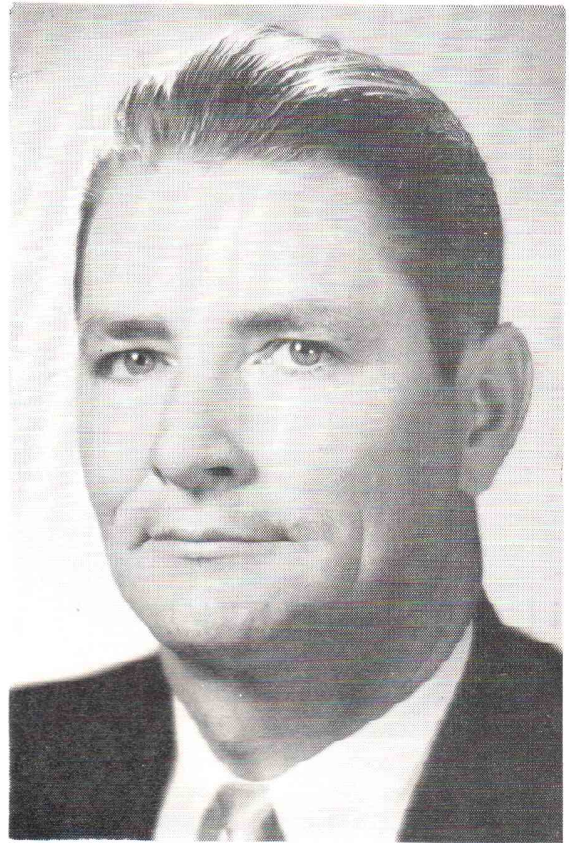
and

*Greetings*

from the

**TALLAHASSEE**

*Chamber of Commerce*



LOUIS HILL, President  
Tallahassee Chamber of Commerce

The Chamber of Commerce welcomes you to Tallahassee and extends best wishes for a most enjoyable and successful Band Festival.

We are honored to have you here and the Chamber of Commerce is proud to serve as sponsor for your Festival.

It is our hope that you will return often and that you will always feel at home in your Capital City and on the Campus of Florida State University.

Sincerely,

LOUIS HILL, President

Florida State University's majorettes are featured in the center of the cover. Beginning in the lower left-hand corner and proceeding clockwise, sketches of the following Tallahassee landmarks may be identified: Killearn Gardens, the First Presbyterian Church, the School of Music, the University Camp on Lake Bradford, the Governor's Mansion, the State Capitol dome, and the facade of Westcott Building on the FSU campus.



## GREETINGS:

We are happy to welcome you to the 1954 Florida State Band and Orchestra Festival in Tallahassee. We hope that you all will enjoy participating in the Festival events and we hope that it will help you to become better musicians and better citizens of our great state and country.

OLIVER HOBBS, *Local Chairman*



## FLORIDA BANDMASTERS ASSOCIATION, INC.

### OFFICERS FOR 1953-54

|   |  |
|---|--|
| H. CARLTON MASON, <i>President</i>          | Quincy High School, Quincy                 |
| E. L. ROBERTS, <i>Vice-President</i>        | St. Petersburg High School, St. Petersburg |
| HOWARD B. SWYERS, <i>Past President</i>     | Palm Beach High School, West Palm Beach    |
| ROBERT O. LAMPI, <i>Secretary-Treasurer</i> | Pahokee High School, Pahokee               |

### DISTRICT OFFICERS

|            |                                   |   |
|------------|-----------------------------------|---|
| District 1 | JOHN B. COLEMAN, <i>Chairman</i>  | STANLEY DELIMBA, <i>Secretary-Treasurer</i>       |
| District 2 | FRANK LODWICK, <i>Chairman</i>    | W. P. KARB, <i>Secretary-Treasurer</i>            |
| District 3 | CHARLES CAMPBELL, <i>Chairman</i> | JOHN P. V. CLARK, JR., <i>Secretary-Treasurer</i> |
| District 4 | ED. W. ROSEVEAR, <i>Chairman</i>  | M. O. KENT, <i>Secretary-Treasurer</i>            |
| District 5 | C. O. HULICK, <i>Chairman</i>     | PHILIP B. SPEER, <i>Secretary-Treasurer</i>       |
| District 6 | OLIVER HOBBS, <i>Chairman</i>     | JOSEPH W. COURSON, <i>Secretary-Treasurer</i>     |



### GREETINGS FROM THE FLORIDA ORCHESTRA ASSOCIATION

On behalf of the Florida Orchestra Association I wish to welcome each participant in this our Fourteenth Annual State Band and Orchestra Contest. May each of you receive the greatest amount of encouragement and enthusiasm from the events held in Tallahassee and may these events serve to make you better musicians and better students.

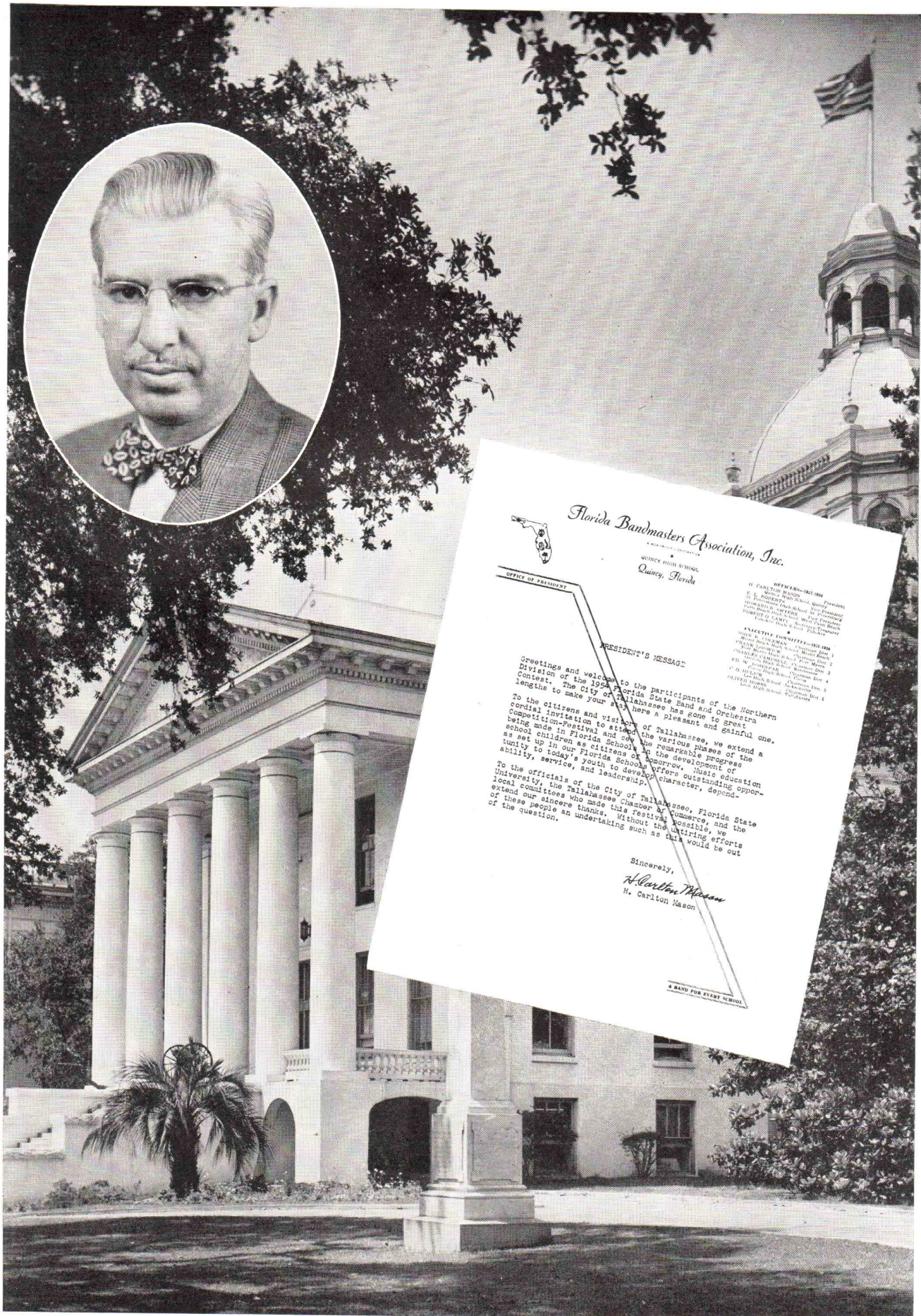
To all of you who are interested in the Youth of America we extend an invitation to visit all events being held in Tallahassee during this festival of music and see what is being accomplished by the young people of Florida.

WILLIAM J. BENTON, *President*  
Florida Orchestra Association

### Florida Orchestra Association Officers, 1953-54

|  |               |
|--|---------------|
| WILLIAM J. BENTON, <i>President</i>        | Daytona Beach |
| ROBERT A. LAWRENCE, <i>Vice-President</i>  | Miami         |
| GLADYS DITSLER, <i>Secretary-Treasurer</i> | Miami         |





OFFICE OF PRESIDENT

**EXECUTIVE COMMITTEE—1923-1924**

|                           |          |        |
|---------------------------|----------|--------|
| JOHN H. COLEMAN           | Chairman | Diet   |
| Michael Beach High School |          |        |
| WANK LEWIS                | Chairman | Beats  |
| Paul Myers High School    |          |        |
| ASHLEY CAMPBELL           | Chairman | Diet 2 |
| University High School    |          |        |
| W. HOFFMAN                | Chairman | Diet 3 |
| Corvallis High School     |          |        |
| HULLIC                    | Chairman | Diet 4 |
| Low High School           |          |        |
| ER HOBBS                  | Chairman | Diet 5 |
| Low High School           |          |        |

Sincerely,  
H. Carlton Mason  
H. Carlton Mason

**A HAND FOR EVERY SCHOOL**



## **VOLKWEIN**

### *Publications for Band*

#### **FATINITZA OVERTURE**

By Franz Von Suppe—Arranged by Paul Yoder  
Full Band \$7.50      Symphonic Band \$10.00

#### **THE SILVER GLADE WALTZES**

By W. L. Skaggs — Op. 54  
Full Band \$3.50      Symphonic \$5.00

#### **OLD SETTLERS ON PARADE**

Novelty — C. W. Dalbey  
Full Band \$3.50      Symphonic \$5.00

#### **YOUTHFUL SPIRIT OVERTURE—Col. Earl D. Irons**

Arranged by the Composer  
Full Band \$6.00      Symphonic \$9.00

#### **MY TUBA SOLO—Geo. Southwell**

New revised edition with modern instrumentation.  
One of the best tuba solos with band acc.  
Full Band \$4.00

Send for thematics of Volkwein Band Marches  
Mail Orders Solicited

**VOLKWEIN BROS., Inc.**  
MUSIC PUBLISHERS

632 Liberty Ave.

Pittsburgh 22, Pa.

## **WELCOME**

DIRECTORS AND BAND MEMBERS



## **THE CORRAL**

1621 S. MONROE

*Hey!*

*Do you need any school book covers?*

Well, we have some for you,  
So while you're in Tallahassee  
Drop by and see the folks at

## **LEON FEDERAL**

Savings and Loan Association

### **TALLAHASSEE**



"The friendly place to save in West Florida"

**CORNER OF MONROE  
AND PARK**



# JUDGES

## HENRY FILLMORE

### (Chairman of Judges)

It has been said that wherever men march to the music of bands — in street parades, in the armed forces, or on the gridirons of America—the martial music of Henry Fillmore, with its compelling rhythm and melodic flair, sets the standard for all to follow. He is recognized throughout the nation as the contemporary “March King.”

The whole range of band literature is Mr. Fillmore’s forte. His catalogue of more than three hundred numbers in active use today includes overtures, operatic selections, solos, novelty pieces, songs, and student training material.

One of the most phenomenal phases of Mr. Fillmore’s composing activities is the vast amount of easy material he has written for young bands. Under the *nom-de-plume* of Harold Bennett, he has written a series of four “Bennett Band Books,” copies of which may be found anywhere in the world where there is a school band. More than a million “Bennett Band Books” have been purchased by aspiring band students.

Henry Fillmore is much in demand as a guest conductor for band concerts and for clinical work with all-state bands and similar groups. Recently he was a featured guest conductor with Paul LaVale’s “Band of America” over NBC. Other guest appearances include the University of Michigan Band, the Texas All-State High School Clinic Band, the University of Miami Band, the University of Pittsburgh Band, the Coldman Band, the University of Miami Band (Fla.), and the Chattanooga All-City Band. His appearance as guest conductor of the massed bands at the annual Orange Bowl Game in Miami is the highlight of the New Year’s festivity.

Mr. Fillmore’s activities as a band and solo contest adjudicator are nationally recognized. He has served in this role in many states, including Utah, Ohio, Indiana, Kentucky, Mississippi, Georgia, and for many years he has acted in the capacity of head judge for the Florida State Band and Orchestra Contest.

Henry Fillmore’s professional experience includes both playing (trombone) and conducting in circus, road-shows, vaudeville, stage shows, musical comedy, park bands, and radio bands. As conductor of the “Fillmore Band,” he reached the height of his career as a professional musician. With this group he toured North America for a number of years and played to audiences numbering in the thousands.



## JACKIE SMITH

### (Solo and Ensemble Twirling)

Pennsylvania State Forensic Championship Twirler for three years. Member of famed Hurricanettes of the University of Miami for three years. Conducted own baton school for three summers in Altoona, Pa. Student of Maynard Velier, past national Commissioner of the All-American Drum Majors Association. Guest twirler on tour with the United States Air Force Band under the direction of Col. George S. Howard. Toured with All-College Variety Show, under direction of Dr. J. Clement Schuler, Amherst, Mass., to Bermuda, the Azores, Scotland, and Iceland. Toured with the University of Miami Band two years to San Salvador and Central America.





# JUDGES

## JOSEPH BERGEIM

(Solos and Ensembles)



Chairman of Music Department, North Division High School, Milwaukee, since 1925. Pioneer in Wisconsin school band movement. Past president, Wisconsin Bandmasters' Association; member, American Bandmasters' Association. Co-author of a band method and instructional material for school bands, and composer of many popular marches and novelties. Wide experience as adjudicator and lecturer on musical subjects.

## GLEN CLIFFE BAINUM

(Sight-Reading)



Glen Cliffe Bainum retired this year as band director at Northwestern University after 27 consecutive years as head of the band department at the University with the exception of four years spent with the music section of the armed forces during the World War II. His career at Northwestern brought him increased recognition as a fine conductor of outstanding concert band organizations, and as possibly the greatest innovator in the marching band field during this period when these organizations became so important to the college football atmosphere. During World War II he served as a regional special service officer in charge of music in this country, and later became the officer in charge of music in the European theatre.

Mr. Bainum's ability as an arranger has resulted in excellent presentations by professional bands and the Northwestern University band, and the help and encouragement he has given to young arrangers have been directly responsible for improving the tone of band arrangements all over the country. He has an outstanding ability with young students, and his energy and youthful approach to music have kept his services as a clinician and adjudicator in demand throughout his career.

Mr. Bainum's proximity to the Chicago scene made it quite natural for his talents to be used in creating the first College All-Star bands which were such an unusual and interesting part of the spectacular College All-Star football games presented each year in Soldier's Field, Chicago. For a number of years he conducted professional bands at Grant Park in Chicago before audiences of 10,000 to 25,000.

Before joining Northwestern University, Mr. Bainum was director of music, Southern Illinois Normal University, assistant director of the University of Illinois Band Department, and director of Public School Music, Grand Rapids, Michigan. Mr. Bainum is a graduate of the University of Illinois.

He has served as associate conductor, Grand Rapids Symphony Orchestra; associate conductor, North Shore Festival Chorus; director, N. U. Men's and Women's choral organizations and Summer Session Symphony Orchestra; and associate conductor of the North Shore Music Festival. In 1946 and 1947, Mr. Bainum served as president of the American Bandmasters Association. He has been secretary-treasurer of this organization since 1933.

## WALTER BEELER

(Bands and Orchestras)



Walter Beeler is Director of Bands at Ithaca College. He also holds the position of professor of music and teaches classes in brass instruments, orchestration, band arranging, and choral arranging. In the past he has held teaching posts at Hartt Conservatory, University of Michigan, Sul Ross College, New York State Music Camp, and the Ernest Williams Band Camp.

Mr. Beeler studied at Ithaca College, Northwestern University, New York University, and Cornell University, and he holds the degrees of B.Mus., B.S., and M.S. He is a member of Phi Mu Alpha Fraternity and the American Bandmasters Association.

As the author of numerous articles he is a frequent contributor to *School Music News*, *School Musician*, *Educational Music Magazine*, and *Instrumentalist*. He is also the author of a wide variety of publications: "Methods for Cornet, Trombone, Baritone, and Tuba," several band books, and a large number of arrangements and solos for brass instruments. Many of the publishers ask him to make their arrangements, and, at present, he is band editor for Charles Hansen Music Company.

Mr. Beeler's clinical and judging engagements have included appearances in New York, Pennsylvania, New Jersey, Connecticut, Massachusetts, Maine, Virginia, Iowa, and Texas.



# JUDGES

## MARK H. HINDSLEY

(Bands and Orchestras)

Since Mr. Hindsley became director of the band at Indiana University in 1925 he has rapidly risen to a position of eminence in the band field and in music education. After outstanding high school band work at Cleveland Heights, Ohio, he was chosen assistant director to A. A. Harding at the University of Illinois. During World War II he attained the rank of lieutenant colonel as an Air Force music officer. Returning to Illinois he succeeded Dr. Harding upon the latter's retirement in 1948. Under his leadership the Illinois Bands have continued their high position and standards. A past president of the College Band Directors National Association, Mr. Hindsley has been guest conductor and teacher in all parts of the country, and his educational publications are widely used.



## WILLIAM D. REVELLI

(Bands and Orchestras)

For more than twenty-five years, the name of William D. Revelli has been synonymous with the bands of America. His vision and ideals are responsible for the degree of perfection that the University of Michigan Bands have attained. His insistence upon quality of performance and his constant search for new and better band music, have earned for him the reputation as one of the country's leading conductors.

In the five years preceding his appointment at the University of Michigan, Dr. Revelli achieved the now-classic feat of five consecutive National Championships with the high school band of Hobart, Indiana. This accomplishment and the ensuing successes of the Michigan bands exemplify the vision and ideals of Dr. Revelli. Under his guidance, the Wind Instrument Department of the University has grown from a faculty of one in 1935 to today's staff of thirteen. The Band Department itself has been enlarged from a band of ninety-six members to three bands with a combined membership exceeding two hundred and fifty.

Recognized as one of the truly outstanding figures in the concert band world, Dr. Revelli has appeared as guest conductor in nearly every state in the nation. One of the top adjudicators in the field, Dr. Revelli's comments are always analytical, keen, and concise.

Dr. Revelli's musical training reflects his driving determination and his high ideals. He has studied with such outstanding men of music as Leon Samotini, L. V. Saar, Charles Spadoni, Felix Borowski, H. A. Vandercook, and George Dasch. In 1915, he entered the Beethoven Music Conservatory, at St. Louis, and in 1919, continued his education at the Columbia Music School. He has also studied at the Chicago Musical College and at the Vandercook School of Music. In 1925, he was appointed music supervisor in the public schools in Hobart, Indiana, where he organized the instrumental department of that city and developed it into national championship caliber within a few years.

Upon his appointment at the University of Michigan in 1935, Dr. Revelli saw the need of an organization similar to that with which he had worked at Hobart. In 1941, he proceeded to organize the College Band Directors National Association, and was elected president of this group.

In recognition of his outstanding work and reputation in the music world, the Chicago Musical College, in June, 1947, conferred upon him the honorary degree of Doctor of Music.

In addition to his duties at Michigan, Dr. Revelli is currently president of the American Bandmasters Association; honorary National Grand President of Kappa Kappa Psi, honorary band fraternity; member of Alpha Kappa Lambda, Phi Mu Alpha, and a host of other musical societies. For the past thirteen years he served as an editor of *Etude*, the music magazine, and was recently appointed to the editorial staff of the *Instrumentalist* magazine. He is the editor of the "University of Michigan Band Series," and was recently appointed an editor of the new "Band Guild of America Series."

His daily mail is filled with letters from former students—many now conductors in their own right—seeking Dr. Revelli's advice and counsel, and he spends many hours with these men, advising them and aiding in the solution of their musical problems. He rarely loses contact with his former students, and never loses interest in their activities and progress.



## CARLETON STEWART

(Solos and Ensembles)

Past President, National School Band Association; Past President, Iowa Bandmasters' Association; Past Chairman of Region 3, National School Band Contests; Formerly Head of Instrumental Music, Mason City Public Schools (19 years); Formerly Solo Cornetist, Pat Conway Band; Past President, Delta Chapter, Phi Mu Alpha Music Fraternity; Past Vice-President, National School Orchestra Assn.; Conductor of Mason City Municipal Band (present—this is the 17th year).





**Leon  
Hardware**

COMPANY

110 E. Pensacola St.

Phone 2-4451

EVERYTHING  
FOR YOUR  
HARDWARE  
NEEDS

*Wishing You A  
Pleasant Visit  
While In  
Tallahassee . . .*

**COLLINS**  
Furniture Company  
TALLAHASSEE,  
FLORIDA

**Make Your Tallahassee Visit a Memorable One!**

AFTER ENJOYING THE  
FINE BAND MUSIC OF THE

*Florida Band Festival*

Partake of a

**FINE DINNER**

In the Delightfully Cool,  
Restful Atmosphere of  
The . . .



2220 West Tennessee St. - Dial 2-9144



**"THE  
SKYLINE"**  
. . . leads  
in favor  
with the  
epicure!



# SCHEDULE OF EVENTS

## LOCATIONS

|   |                              |
|---|------------------------------|
| Concert Contest.....                      | Opperman Music Hall          |
| Sight Reading and Student Conducting..... | Inst. Room 224               |
| Twirling Contest.....                     | Front Lawn of Music Building |
| Solos and Ensembles.....                  | Room 222, Judge Bergeim      |
|   | Room 335, Judge Stewart      |
| Warmup Room.....                          | Choral Room 223              |
| Marching Contest.....                     | Doak S. Campbell Stadium     |

All directors and individuals are requested to follow the schedule as outlined. Much time has been given to working out a schedule which will be best for all bands.

The schedule will probably gain time during each day, and you are requested to be ready 30 minutes before your time. Many solos last only three or four minutes, whereas ten minutes have been allotted each contestant, therefore **PLEASE BE READY AHEAD OF TIME.**

**REGISTRATION:** Room 203, Music Building—2:00 p.m. to 5:00 p.m. Wednesday, May 12, 1954; 9:00 a.m. to 12:00 noon, Thursday, May 13, 1954; 1:00 p.m. to 3:00 p.m. Thursday afternoon, May 13, 1954; 9:00 a.m. to 12:00 noon, Friday morning, May 14, 1954; 1:00 p.m. to 3:00 p.m., Friday afternoon, May 14, 1954.

## THURSDAY, MAY 13, 1954

### SOLOS AND ENSEMBLES

#### JUDGE BERGEIM—Room 222

|       |                                      |                |
|-------|--------------------------------------|----------------|
| A.M.  |                                      |                |
| 9:00  | Fred Boska (Piano).....              | Ketterlinus    |
| 9:10  | Elanor Lang.....                     | Gainesville    |
| 9:20  | Mary Pearce (Horn) (Jr. High).....   | Gainesville    |
| 9:30  | Cornet Trio.....                     | Gainesville    |
| 9:40  | Clarinet Quartet No. 2.....          | Gainesville    |
| 9:50  | W. W. Quintet.....                   | Gainesville    |
| 10:00 | John Swates (Bass).....              | Landon         |
| 10:10 | Butch Johnson (Cor.) (Jr. High)..... | Landon         |
| 10:20 | W. W. Quintet.....                   | Landon         |
| 10:30 | Arthur Carter (Trombone).....        | Robert E. Lee  |
| 10:40 | Ruth Marcellus (Horn).....           | Robert E. Lee  |
| 10:50 | Charlotte Tarratus (Flute).....      | Robert E. Lee  |
| 11:00 | Clarinet Quartet (Jr. High).....     | Taylor Co.     |
| 11:10 | W. W. Trio.....                      | Leon           |
| 11:20 | Clarinet Quartet.....                | Leon           |
| 11:30 | Richard Meyer (Cornet).....          | Choctawhatchee |
| 11:40 | Larry Keating (Clarinet).....        | Choctawhatchee |
| 11:50 | Drum Duet.....                       | Choctawhatchee |

#### LUNCH

|      |   |              |
|------|---|--------------|
| P.M. |   |              |
| 1:30 | Phyllis Rye.....                          | Madison      |
| 1:40 | Sax Quartet No. 2.....                    | Cocoa        |
| 1:50 | Brass Sextet.....                         | Cocoa        |
| 2:00 | Larry Morgan (Baritone).....              | Titusville   |
| 2:10 | Skipper Johns (Bass).....                 | Titusville   |
| 2:20 | Shirley Wise (Piano) (Jr. High).....      | Walton Co.   |
| 2:30 | Clarinet Trio.....                        | Bradford Co. |
| 2:40 | Brass Sextet.....                         | Bradford Co. |
| 2:50 | Mary L. Collier (Clarinet).....           | Suwannee     |
| 3:00 | Douglas Clement (Bass).....               | Suwannee     |
| 3:10 | Mary Bielling (Flute).....                | Union Co.    |
| 3:20 | Verrell Clyatt (Clarinet) (Jr. High)..... | Union Co.    |
| 3:30 | Pang Young (Baritone) (Jr. High).....     | Union Co.    |
| 3:40 | Mazie Younge (Trumpet) (Jr. High).....    | Union Co.    |

#### JUDGE STEWART—Room 335

|       |                                 |                |
|-------|---------------------------------|----------------|
| A.M.  |                                 |                |
| 9:00  | Brass Sextet.....               | Gainesville    |
| 9:10  | Peggy Hughes (A. Sax).....      | Gainesville    |
| 9:20  | Ann Stapleton (Horn).....       | Gainesville    |
| 9:30  | Sylvia Asbell (Flute).....      | Gainesville    |
| 9:40  | Clarinet Quartet No. 1.....     | Gainesville    |
| 9:50  | Horn Quartet.....               | Gainesville    |
| 10:00 | Dickson Reddett (Clarinet)..... | Landon         |
| 10:10 | Richard Pittman (Horn).....     | Landon         |
| 10:20 | B. W. McKendree (Trombone)..... | Robert E. Lee  |
| 10:30 | Carl Bennett (Trombone).....    | Robert E. Lee  |
| 10:40 | Bill Greene (Clarinet).....     | Robert E. Lee  |
| 10:50 | Trombone Quartet.....           | Robert E. Lee  |
| 11:00 | Cornet Trio (Jr. High).....     | Taylor Co.     |
| 11:10 | Connie Neal.....                | Leon           |
| 11:20 | Cornet Trio.....                | Leon           |
| 11:30 | Sax Quartet.....                | Leon           |
| 11:40 | Barbara Jamieson.....           | Choctawhatchee |
| 11:50 | Clarinet Quartet.....           | Choctawhatchee |

#### LUNCH

|      |   |              |
|------|---|--------------|
| P.M. |   |              |
| 1:30 | J. P. Morrow (Bass).....                  | Madison      |
| 1:40 | Sax Quartet No. 1.....                    | Cocoa        |
| 1:50 | Woodwind Quintet.....                     | Cocoa        |
| 2:00 | Jimmie Baggett (A. Sax).....              | Havana       |
| 2:10 | Jack Snowden (T. Sax).....                | Titusville   |
| 2:20 | Bobby Hartman (Trombone).....             | Titusville   |
| 2:30 | Brass Sextet.....                         | Titusville   |
| 2:40 | Jim Davis (Trumpet).....                  | Bradford Co. |
| 2:50 | Trumpet Trio.....                         | Bradford Co. |
| 3:00 | Susan Johns (Flute).....                  | Suwannee Co. |
| 3:10 | Sax Quartet.....                          | Suwannee Co. |
| 3:20 | Stanley Scott (Trombone).....             | Suwannee Co. |
| 3:30 | Mellaing Clyatt (Horn) (Jr. High).....    | Union Co.    |
| 3:40 | Jimmy Douglass (Baritone) (Jr. High)..... | Union Co.    |
| 3:50 | Marshall Dukes (Bass).....                | Union Co.    |
| 4:00 | Clarinet Quartet.....                     | Leon         |
| 4:10 | Woodwind Trio (Jr. High).....             | Leon         |

### TWIRLING

#### JUDGE SMITH—Front Lawn of Music Building

|       |                              |               |
|-------|------------------------------|---------------|
| A.M.  |                              |               |
| 10:00 | Betty Rose Gramling.....     | Jefferson Co. |
| 10:10 | Pauline Stephens.....        | Leon          |
| 10:20 | Barbara Sue Benton.....      | Leon          |
| 10:30 | Charles Tadlock.....         | Leon          |
| 10:40 | Toi Faye Hattaway.....       | Walton Co.    |
| 10:50 | Lois Steinecke.....          | Ketterlinus   |
| 11:00 | Margaret Robinson.....       | Ketterlinus   |
| 11:10 | Beverly Jones.....           | Robert E. Lee |
| 11:20 | Jane Buckner.....            | Robert E. Lee |
| 11:30 | Jennie White.....            | Robert E. Lee |
| 11:40 | Twirling Ensemble No. 1..... | Robert E. Lee |
| 11:50 | Twirling Ensemble No. 2..... | Robert E. Lee |

#### LUNCH

|      |                            |              |
|------|----------------------------|--------------|
| P.M. |                            |              |
| 1:30 | Mary Buck.....             | Cocoa        |
| 1:40 | Joan Smith.....            | Bradford Co. |
| 1:50 | Pat Barnet (Jr. High)..... | Lakeview     |
| 2:00 | Coleen Englebreton.....    | Seminole     |
| 2:10 | Sandra Bloodworth.....     | Columbia Co. |
| 2:20 | Nettie Black.....          | Columbia Co. |
| 2:30 | Bonnie Carol Vereen.....   | Taylor Co.   |





*Welcome to Tallahassee*

*We hope your stay here will be  
most enjoyable —*

TALLAHASSEE BANKERS ASSOCIATION

INDUSTRIAL BANK

CAPITAL CITY NATIONAL BANK

THE STATE BANK & TRUST CO.

THE LEWIS STATE BANK

Members of Federal Deposit Insurance Corp.



## SCHEDULE OF EVENTS

### CONCERT

#### JUDGES REVELLI, BEELER, HINDSLEY—Opperman Music Hall

A.M. Class "D" Band—  
 9:00 Union County High School, Lake Butler  
 Class "C" Band—  
 9:30 Greensboro High School  
 Class "CC" Bands—  
 10:00 Chattahoochee High School  
 10:30 Madison High School  
 11:00 Quincy High School  
 Class "B" Band—  
 11:30 Cocoa High School  
 P.M. Class "B" Band—  
 1:30 Ketterlinus High School, St. Augustine  
 Class "BB" Band—  
 2:00 Gainesville High School  
 Class "A" Band—  
 2:30 Landon High School, Jacksonville  
 Class "AA" Band  
 3:00 Robert E. Lee High School, Jacksonville

### SIGHT-READING

#### JUDGE BAINUM—Room 224

#### STUDENT CONDUCTING

#### JUDGE BAINUM—Room 224

P.M.  
 3:00 Edward Newsom ..... Landon  
 Rubin Migrohi ..... Landon  
 David Turner ..... Landon  
 3:30 Charlotte Tarratus ..... Robert E. Lee

### Classification of Bands

Schools having less than 100 students  
 in 10th, 11th, and 12th grades ..... Class "C"  
 100 to 249 ..... Class "CC"  
 250 to 499 ..... Class "B"  
 500 to 749 ..... Class "BB"  
 750 to 1000 ..... Class "A"  
 Over 1000 ..... Class "AA"

### DRILL CONTEST

#### JUDGES REVELLI, STEWART, BERGEIM, BAINUM, SMITH, BEELER, HINDSLEY—Doak S. Campbell Stadium

#### Marching Schedule

P.M. Class "D" Band  
 8:00 Union County High School, Lake Butler  
 Class "C" Band—  
 8:10 Greensboro High School  
 Class "CC" Bands—  
 8:20 Chattahoochee High School  
 8:30 Madison High School  
 8:40 Quincy High School  
 8:50 New Smyrna Beach High School  
 Class "B" Bands—  
 9:00 Cocoa High School  
 9:10 DeLand High School  
 9:20 Ketterlinus High School, St. Augustine  
 Class "BB" Band—  
 9:30 Gainesville High School  
 Class "A" Band  
 9:40 Landon High School, Jacksonville  
 Class "AA" Band  
 9:50 Robert E. Lee High School, Jacksonville

### Massed Band Concert

*Suwannee River* ..... Foster  
 Conducted by Mr. Hindsley  
*North-South College All Stars March* ..... Fillmore  
 Conducted by Mr. BERGEIM  
*El Gaucho March* ..... Mcsang  
 Conducted by Mr. Bainum  
*Storm King March* ..... Finlayson  
 Conducted by Mr. Beeler  
*Legionnaires on Parade March* ..... Kleffman  
 Conducted by Mr. Stewart  
*The Star Spangled Banner* ..... Adapted by Fillmore  
 Conducted by Mr. Revelli

## FRIDAY, MAY 14, 1954

### SOLOS AND ENSEMBLES

#### JUDGE BERGEIM—Room 222

A.M.  
 9:00 Sax Quartet ..... Chipley  
 9:10 Tina Gifford (Cornet) ..... DeLand  
 9:20 Willa Schmitt (Clarinet) ..... DeLand  
 9:30 Charles Bartling (Baritone) ..... DeLand  
 9:40 John Carter (Bass) ..... DeLand  
 9:50 Tony Dalbo (Xylophone) ..... DeLand  
 10:00 Woodwind Trio ..... DeLand  
 10:10 Billy Bowles (Clarinet) ..... Leon  
 10:20 Mary Barnette (Flute) ..... Leon  
 10:30 Margaret Humphress (Flute) (Jr. High) ..... Leon  
 10:40 Ernest Stoutamire (Trombone) ..... Leon  
 10:50 Pat Mason (French Horn) ..... Leon  
 11:00 Sandra Fletcher (Bassoon) ..... Leon  
 11:10 Mac Tidwell (Trumpet) (Jr. High) ..... Tate  
 11:20 Cornet Trio ..... Tate  
 11:30 Frank Friedman (Flute) ..... Andrew Jackson  
 11:40 Donald Stein (Trumpet) ..... Andrew Jackson  
 11:50 Lynnne Cavin (Piano) ..... Andrew Jackson

### LUNCH

P.M.  
 1:30 Flute Trio ..... Andrew Jackson  
 1:40 Trombone Quartet ..... Andrew Jackson  
 1:50 C. Richards (Horn) ..... Alfred I. Dupont  
 2:00 R. Little (Trumpet) (Jr. High) ..... Alfred I. Dupont  
 2:10 John Marcellus (Bar.) (Jr. High) ..... Alfred I. Dupont  
 2:20 Leo Mack (Oboe) ..... Duncan U. Fletcher  
 2:30 Hugh Rawls (Trumpet) ..... Duncan U. Fletcher  
 2:40 Brass Quartet ..... Duncan U. Fletcher  
 2:50 Key Scales (Trombone) (Jr. High) ..... Weirsdale  
 3:00 Larry Holder (B. Clarinet) (Jr. High) ..... Weirsdale  
 3:10 Tracy Russell (Piano) ..... Fernandina  
 3:20 Brass Sextet ..... New Smyrna Beach  
 3:30 Clarinet Quartet ..... New Smyrna Beach  
 3:40 M. J. Menge (Cornet) ..... Pensacola  
 3:50 Jacqueline Macon (Piano) ..... Pensacola  
 4:00 Drum Duet ..... Pensacola  
 4:10 Cornet Trio No. 1 ..... Pensacola  
 4:20 Brass Sextet ..... Pensacola



*Welcome . . .*

**PUTNAM**  
REGISTERED  
**JEWELERS**

American Gem Society

**308 S. Monroe**

**2-3075**

WELCOME . . .

**HOLLAND'S**  
**RESTAURANT**

**Complete Soda Fountain  
And Restaurant Service**

FACING THE CAPITOL  
AT 106 EAST PENSACOLA STREET

Excellent Food at All Hours  
AIR - CONDITIONED

**"We Are Famous for Our  
HOME-MADE PIES"**

*Troxler's*

**Shop for Young Men and Boys**

**Everything in Sportswear,  
Dress Clothes and Shoes  
In Brands that Give You Quality and Style**

**OFFICIAL HEADQUARTERS  
FOR ALL SCOUT UNIFORMS AND EQUIPMENT**

**104 S. Monroe St.**

**Telephone 2-2045**



# SCHEDULE OF EVENTS

## JUDGE STEWART—Room 335

A.M.

|       |                                 |                |
|-------|---------------------------------|----------------|
| 9:00  | Woodwind Quartet                | Chipley        |
| 9:10  | Drum Quartet                    | Chipley        |
| 9:20  | Lucy Rand (Cornet)              | DeLand         |
| 9:30  | Margaret Mott (Clarinet)        | DeLand         |
| 9:40  | Jackie Robinson (Trombone)      | DeLand         |
| 9:50  | Roy Kartzmarc (String Bass)     | DeLand         |
| 10:00 | Brass Sextet                    | DeLand         |
| 10:10 | Drum Quartet                    | DeLand         |
| 10:20 | June Lassiter (Clarinet)        | Leon           |
| 10:30 | Raymond Revell (Flute)          | Leon           |
| 10:40 | John Bracewell (Trombone)       | Leon           |
| 10:50 | Julia Hobbs (Oboe) (Jr. High)   | Leon           |
| 11:00 | Kitty Isburg (Flute) (Jr. High) | Tate           |
| 11:10 | Bunnie Hampton (Cornet)         | Tate           |
| 11:20 | Brass Sextet                    | Tate           |
| 11:30 | Frank Stillman (Tenor Sax)      | Andrew Jackson |
| 11:40 | Richard Biscopink (Bar.)        | Andrew Jackson |
| 11:50 | Marvin Wainwright (Piano)       | Andrew Jackson |

## LUNCH

P.M.

|      |                                     |                    |
|------|-------------------------------------|--------------------|
| 1:30 | Brass Sextet                        | Andrew Jackson     |
| 1:40 | Woodwind Trio                       | Andrew Jackson     |
| 1:50 | Lee Naitz (Flute) (Jr. High)        | Alfred I. DuPont   |
| 2:00 | Billy Pippin (Bass) (Jr. High)      | Alfred I. Dupont   |
| 2:10 | Brass Quartet                       | Alfred I. Dupont   |
| 2:20 | David Conway (Flute)                | Duncan U. Fletcher |
| 2:30 | Woodwind Quartet                    | Duncan U. Fletcher |
| 2:40 | W. Allen Laugesen (Bar.) (Jr. High) | Weirsdale          |
| 2:50 | John Boats (Piano)                  | Weirsdale          |
| 3:00 | Jean Thompson (Oboe)                | Fernandina         |
| 3:10 | Brass Sextet                        | Fernandina         |
| 3:20 | Steve Hester (Trumpet)              | New Smyrna Beach   |
| 3:30 | Cornet Trio                         | New Smyrna Beach   |
| 3:40 | Dwight Covington (Cornet)           | Pensacola          |
| 3:50 | Bill Womack (Drum)                  | Pensacola          |
| 4:00 | Wilbur Sasnette (Piano)             | Pensacola          |
| 4:10 | Horn Quartet                        | Pensacola          |
| 4:20 | Cornet Trio No. 2                   | Pensacola          |

## TWIRLING

### JUDGE SMITH—Front Lawn of Music Building

A.M.

|       |                         |                  |
|-------|-------------------------|------------------|
| 10:00 | Betty Votka             | Andrew Jackson   |
| 10:10 | Carolyn Middleton       | Andrew Jackson   |
| 10:20 | Dunlop Harrell          | Andrew Jackson   |
| 10:30 | Dot Pate                | Tate             |
| 10:40 | Susie Eaton (Jr. High)  | Tate             |
| 10:50 | Sharon Webb (Jr. High)  | Tate             |
| 11:00 | Twirling Ensemble No. 1 | Alfred I. Dupont |
| 11:10 | Twirling Ensemble No. 2 | Alfred I. Dupont |
| 11:20 | Twirling Ensemble No. 1 | Andrew Jackson   |
| 11:30 | Twirling Ensemble No. 2 | Andrew Jackson   |
| 11:40 | Lassie McDonald         | Weirsdale        |

## LUNCH

P.M.

|      |                            |             |
|------|----------------------------|-------------|
| 1:30 | Corlene Siltmor (Jr. High) | Clay County |
| 1:40 | Patricia Marcey            | Clay County |
| 1:50 | Sonya Kenney               | Clay County |
| 2:00 | Twirling Ensemble          | Clay County |
| 2:10 | Mary Poynter               | Melbourne   |
| 2:20 | Kenneth Sasser             | Pensacola   |
| 2:30 | Beverly Daniels            | Pensacola   |
| 2:40 | Janet Godwin               | Pensacola   |
| 2:50 | June Cooley                | Pensacola   |
| 3:00 | Twirling Ensemble          | Pensacola   |
| 3:10 | Rebecca Simpson (Jr. High) | Milton      |
| 3:20 | Marvin Ates                | Milton      |
| 3:30 | Mary Powell                | Seabreeze   |
| 3:40 | Niki Gustat                | Seabreeze   |
| 3:50 | Twirling Ensemble          | Seabreeze   |

## CONCERT

### JUDGES REVELLI, BEELER, HINDSLEY—Opperman Music Hall

A.M. Class "D" Orchestra—

9:00 Alfred I. Dupont, Jacksonville

Class "D" Band—

9:30 Duncan U. Fletcher, Jacksonville

Class "C" Bands—

10:00 Weirsdale High School

10:30 Williston High School

Class "CC" Bands—

11:00 Fernandina High School

11:30 New Smyrna Beach High School

## LUNCH

P.M. Class "B" Bands—

1:30 Chipley High School

2:00 DeLand High School

Class "A" Band—

2:30 Leon High School, Tallahassee

Class "AA" Band—

3:00 Andrew Jackson High School, Jacksonville

## SIGHT-READING

### JUDGE BAINUM—Room 224

## STUDENT CONDUCTING

### JUDGE BAINUM—Room 224

P.M.

3:30 Richard Biscopink

Andrew Jackson

Lee Turner

Andrew Jackson

## DRILL CONTEST

### JUDGES REVELLI, STEWART, BERGEIM, BAINUM, SMITH, BEELER, HINDSLEY—Doak S. Campbell Stadium

## Marching Schedule

P.M. Class "D" Band—

8:00 Duncan U. Fletcher High School, Jacksonville

Class "C" Bands—

8:10 Weirsdale High School

8:20 Bunnell High School

8:30 Williston High School

Class "CC" Bands—

8:40 Clay County High School, Green Cove Springs

8:50 Fernandina High School

Class "B" Bands—

9:00 Melbourne High School

9:10 Milton High School

9:20 Chipley High School

9:30 Seabreeze High School, Daytona Beach

Class "A" Band—

9:40 Leon High School, Tallahassee

Class "AA" Bands—

9:50 Pensacola High School

10:00 Andrew Jackson High School, Jacksonville

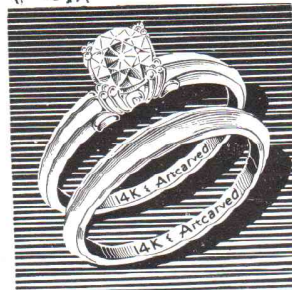
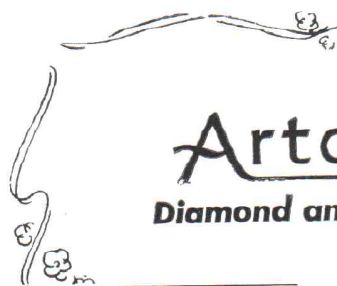


Welcome  
to  
Tallahassee

WE HOPE YOUR  
VISIT WILL BE AN  
ENJOYABLE ONE

*Mendelson's*

Tallahassee's Most Complete  
Department Store



Beloved by brides for over 100  
years. Guaranteed and regis-  
tered for your protection.

Advertised in *LIFE* and *LOOK*  
Tune in the LANNY ROSS radio show  
every Sunday  
\*Trade mark reg. Prices incl. Fed. Tax  
Rings enlarged to show detail

ASHMONT SET  
Diamond Ring . . \$250  
Wedding Ring . . \$16.00

DUGGAN WHIDDON—Jeweler

209 So. Monroe

Phone 2-4713

AUTHORIZED ARTCARVED JEWELER

- - For Fine Food Visit - -

Tallahassee's **Most Exclusive** Dining Room

*The*  
*Silver*  *Slipper*

Try Our Famous Charcoal Broiled Steaks

**Facilities For**

**Weddings — Parties — Banquets**

**South Monroe Street**

**Dial 2-4961**

**JAMES KALFAS — Owner-Manager**

**BULKLEY - NEWMAN**  
**Printing Company**

*"Producers Of Fine Printing"*

451 W. GAINES STREET

TALLAHASSEE

FLORIDA



## SCHEDULE OF EVENTS

### Massed Band Concert

|  |                     |
|--|---------------------|
| <i>Suwannee River</i> .....                      | Foster              |
| Conducted by Mr. Hindsley                        |                     |
| <i>North-South College All Stars March</i> ..... | Fillmore            |
| Conducted by Mr. Bergeim                         |                     |
| <i>El Gaucho March</i> .....                     | Mesang              |
| Conducted by Mr. Bainum                          |                     |
| <i>Storm King March</i> .....                    | Finlayson           |
| Conducted by Mr. Beeler                          |                     |
| <i>Legionaires on Parade March</i> .....         | Kleffman            |
| Conducted by Mr. Stewart                         |                     |
| <i>The Star Spangled Banner</i> .....            | Adapted by Fillmore |
| Conducted by Mr. Revelli                         |                     |

**SATURDAY, MAY 15, 1954**

### SOLOS AND ENSEMBLES

#### JUDGE BERGEIM—Room 222

|       |   |
|-------|---|
| A.M.  |   |
| 9:00  | Louis Wilder (Bass)..... Andrew Jackson     |
| 9:10  | Kathleen Madden (Piano)..... Seabreeze      |
| 9:20  | Edwin Sherman (Piano)..... Seabreeze        |
| 9:30  | Joe Smith (Clarinet)..... Seabreeze         |
| 9:40  | Dennis Lee (Trombone)..... Seabreeze        |
| 9:50  | George Smith (Baritone)..... Seabreeze      |
| 10:00 | Kathleen Madden (Snare Drum)..... Seabreeze |
| 10:10 | Warren Keene (Horn)..... Palatka            |
| 10:20 | John Owen (Cornet)..... Palatka             |
| 10:30 | Donald Crooks (Clarinet)..... Lakeview      |
| 10:40 | Douglas Loppacher (Bass)..... Lakeview      |
| 10:50 | Bob Reely (Piano)..... Seminole             |
| 11:00 |   |
| 11:10 |   |
| 11:20 |   |
| 11:30 | David Brinson (BBb Bass)..... Melbourne     |
| 11:40 | Jennie Castello (Cornet)..... Melbourne     |
| 11:50 | Helen Brinson (Horn)..... Melbourne         |

#### LUNCH

|      |  |
|------|--|
| P.M. |  |
| 1:30 | Charles Turner (Cornet)..... Bunnell               |
| 1:40 | Jean Mincher (Clarinet)..... Clay County           |
| 1:50 | Klara Buchotiz (Alto Sax)..... Clay County         |
| 2:00 | Ann Sharpless (T. Sax) (Jr. High)..... Clay County |
| 2:10 | Carl Rosenbush (Piano)..... Clay County            |
| 2:20 | Alice Andreson (Bass Clarinet)..... Clay County    |
|      | (Jr. High)   |
| 2:30 | Paul Boyette (Cornet)..... Clay County             |
| 2:40 | Carl Rosenbush (Horn)..... Clay County             |
| 2:50 | Carl Johnson (Trombone)..... Clay County           |
| 3:00 | Sax Quartet..... Clay County                       |
| 3:10 | Rodney Emery (Bassoon)..... Melbourne              |
| 3:20 | Lonnie Pruitt (Snare Drum)..... Melbourne          |
| 3:30 | Cornet Trio..... Melbourne                         |
| 3:40 | Helen Youngblood (Piano) (Jr. High)..... Milton    |
| 3:50 | Horn Quartet..... Milton                           |
| 4:00 | Clarinet Quartet..... Milton                       |

#### JUDGE STEWART—Room 335

|       |  |
|-------|--|
| A.M.  |  |
| 9:00  | Elaine Coe (Cello)..... Andrew Jackson       |
| 9:10  | Brass Quartet..... Andrew Jackson            |
| 9:20  | Julia Madden (Piano)..... Seabreeze          |
| 9:30  | Jimmy Cook (Clarinet)..... Seabreeze         |
| 9:40  | Bud Dyer (Trumpet)..... Seabreeze            |
| 9:50  | Lee Riggs (Trombone)..... Seabreeze          |
| 10:00 | Niki Gustat (Marimba)..... Seabreeze         |
| 10:10 | Roberta Dixon (Piano)..... Palatka           |
| 10:20 | Billy Gibbons (Horn) (Jr. High)..... Palatka |
| 10:30 | Pete Clements (Alto Sax)..... Lakeview       |
| 10:40 | Jim Owen (Bass)..... Seminole                |
| 10:50 |  |
| 11:00 |  |
| 11:10 |  |
| 11:20 |  |
| 11:30 | Mary Poynter (Baritone)..... Melbourne       |
| 11:40 | Carolyn Nielson (Trombone)..... Melbourne    |
| 11:50 | Jackie Horne (Cornet)..... Melbourne         |

#### LUNCH

|      |   |
|------|---|
| P.M. |   |
| 1:30 | Gene Knight (Cornet)..... Bunnell               |
| 1:40 | Shirley Campbell (Clarinet)..... Clay County    |
|      | (Jr. High)                                      |
| 1:50 | Don Sohm (Clarinet)..... Clay County            |
| 2:00 | Bill Heney (A. Sax) (Jr. High)..... Clay County |
| 2:10 | Tom Glennon (T. Sax)..... Clay County           |
| 2:20 | Charlene Chevalier (Piano)..... Clay County     |
| 2:30 | Roger Bryan (Cornet)..... Clay County           |
| 2:40 | Ed Heney (Cornet)..... Clay County              |
| 2:50 | Polly Maxwell (Horn)..... Clay County           |
| 3:00 | Jerry Llewellyn (Bass)..... Clay County         |
| 3:10 | Brass Quintet..... Clay County                  |
| 3:20 | Jennie Castello (Piano)..... Melbourne          |
| 3:30 | Gail Hager (Trombone)..... Melbourne            |
| 3:40 | Ronnie Emery (Piano)..... Melbourne             |
| 3:50 | Donnie Allen (Clarinet)..... Milton             |
| 4:00 | Bill Hayes (Trombone)..... Milton               |
| 4:10 | Brass Sextet..... Milton                        |

### CONCERT

#### JUDGES REVELLI, BEELER, HINDSLEY—Opperman Music Hall

|       |   |
|-------|---|
| A.M.  | Class "AA" Band—                            |
| 9:00  | Pensacola High School                       |
|       | Class "C" Band—                             |
| 9:30  | Bunnell High School                         |
|       | Class "CC" Band—                            |
| 10:00 | Clay County High School, Green Cove Springs |
|       | Class "B" Bands—                            |
| 10:30 | Melbourne High School                       |
| 11:00 | Milton High School                          |
| 11:30 | Seabreeze High School, Daytona Beach        |
|       | Class "AA" Orchestra                        |
| 12:00 | Andrew Jackson High School, Jacksonville    |

### SIGHT-READING

#### JUDGE BAINUM—Room 224

### STUDENT CONDUCTING

#### JUDGE BAINUM—Room 224

|       |                               |
|-------|-------------------------------|
| A.M.  |                               |
| 9:30  | Jack Dennis..... Pensacola    |
| 10:00 | Charles Turner..... Bunnell   |
|       | Ronnie Anderson..... Seminole |



*we  
toot our horn  
all the time for . . .*

*leon high*

**state office supply co.**

**207 s. adams street**

**phone 2-2607**

**McCRORYS**

**SHOP HERE  
FOR SOUVENIRS AND NOVELTIES**

**FOR TOPS IN FOOD  
VISIT OUR  
RESTAURANT  
AND  
STAND-UP BAR**

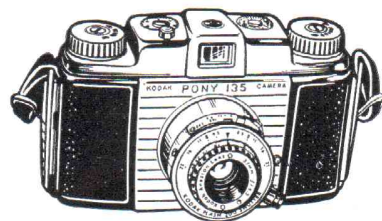
*headquarters  
for jantzen*

**MAYERON'S**

**100 E. COLLEGE**

**TALLAHASSEE**

**FLORIDA**



**Your Photographic Headquarters**

**Tallahassee Camera  
CENTER**

**(Across from the Florida Theatre)**

**123 North Monroe  
TALLAHASSEE, FLORIDA**





## ANDREW JACKSON BAND

JACKSONVILLE, FLORIDA

Philip B. Spear, Director

The Andrew Jackson Band was organized in September, 1945, under the direction of the Late Milton B. Weary, and since that time has performed for all home football games and several out of town games. It has also appeared in numerous parades and at civic affairs. It has participated in a number of radio programs in addition to its performance at the annual Kiwanis Charity Game and the New Years Day Gator Bowl Game.

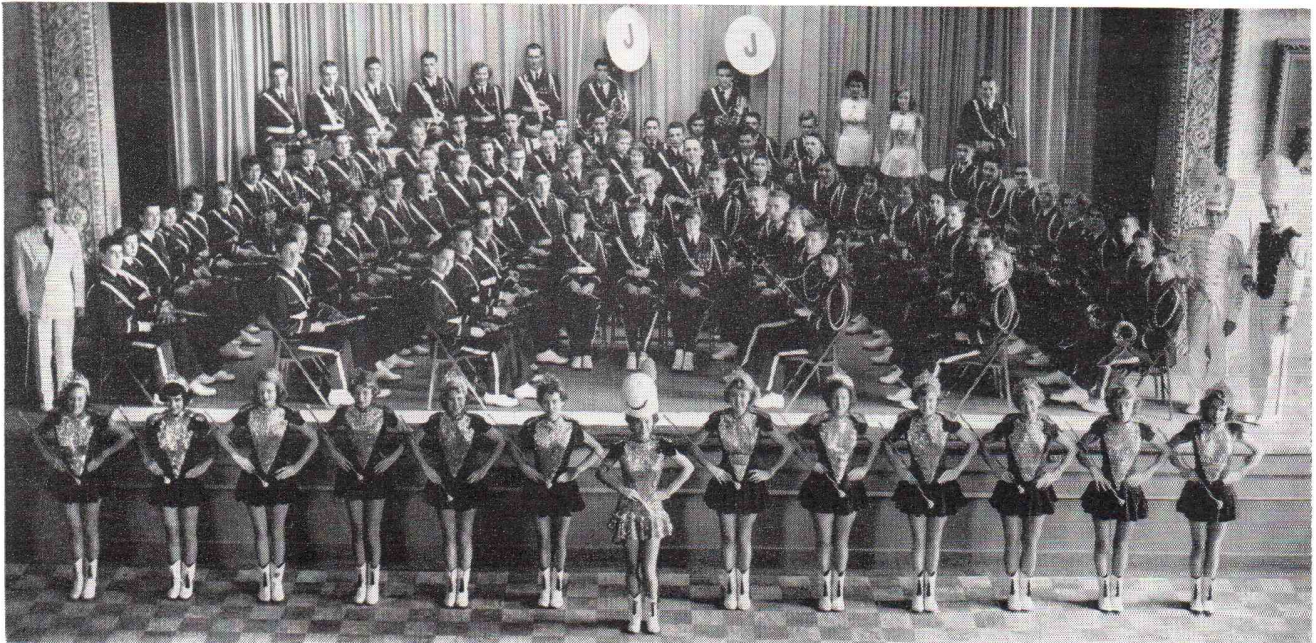
The band was first associated with the state program by appearing at the District contest in St. Augustine, March, 1947, and at the State Festival in Miami that year. It has entered the contests each year since that time.

Philip B. Spear, the present director of the Jackson Band, graduated from Mansfield State Teachers College, Mansfield, Pennsylvania, in 1940 with a degree of Bachelor of Science in Music Education, and taught in the public school in Pennsylvania before serving in the Air Corps. He received his Masters Degree in Music Education from Florida State University at Tallahassee during the summer of 1953.

Mr. Spear accepted the position of bandmaster at Kirby-Smith Junior High School in Jacksonville in December, 1947 and remained in that position until January, 1952, at which time he accepted the position of bandmaster at Andrew Jackson High School.

### BAND ROSTER

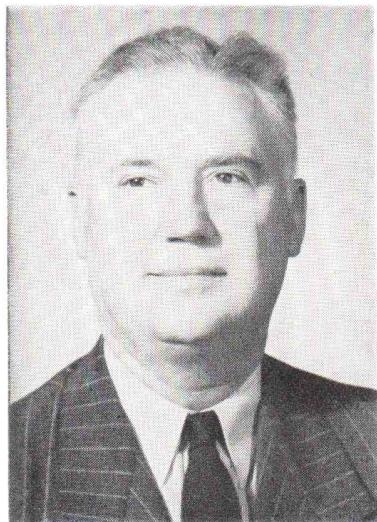
|  |  |  |   |  |   |
|--|--|--|---|--|---|
| <b>FLUTES</b><br>Elaine Allen<br>Sandra Barnett<br>David Dunkley<br>Robert Payne<br>Ellen Starbuck<br>Clara Blain<br>Margaret Janz   | Russell Lloyd<br>Sam Miller<br>Aline Morgan<br>Dianne Presson<br>Jo Ann Scott<br>Dolores Stewart<br>Dick Stuart<br>Lee Turner<br>Phyllis Tyson   | <b>BASSOONS</b><br>Frank Freedman<br>Montye Gregg<br>Charlene Sult<br><b>SOPRANO SAX</b><br>Watfie Crady<br><b>ALTO SAX</b><br>Elaine Coe<br>Dorothea Durrance<br>Sheldon Jackson<br>Betty Marjenhoff<br>Peggy Ponce | <b>CORNETS &amp; TRUMPETS</b><br>Robert Aldrich<br>Charles Brightwell<br>Raymond Gouin<br>Carolyn Herndon<br>Yvonne Horn<br>Curtis Hyers<br>Harold Mills<br>Jerrell Norton<br>Ralph Roth<br>Donald Stein<br>Marvin Wainwright<br>Edward Watkins<br>Deanna Andring<br>Clyde Ballentine | Joyce Pearson<br>Jim Tillman<br><b>TROMBONES</b><br>Jerry Crauswell<br>Cynthia Elmer<br>Jim Howland<br>Ann Snow<br>Ronald Stewart<br>Linwood Tisdell<br>Fred Whitney<br>Russell Wilkinson  | Curtis Remsen<br>George Shahood<br>John Strickland<br>Louis Whilden<br>Frank Freedman |
| <b>E♭ CLARINET</b><br>Robert Elrod<br><b>B♭ CLARINETS</b><br>Kay Blount<br>Charlotte Beckley<br>Nancy Cobb<br>John Danese<br>Berkley Davis<br>Arthur Foster<br>Meryl Geiger<br>Linda Geisenberg<br>Roberta Hawkins<br>Tom Holley<br>Barbara Kanago | <b>ALTO CLARINET</b><br>Elizabeth Hackett<br><b>BASS CLARINET</b><br>Charles Cooper<br>Erma Robinson<br><b>OBOES</b><br>Sandra Inches<br>K. McElhaney<br>Mary Lou Pate<br>Linda Russell<br><b>ENGLISH HORN</b><br>K. McElhaney | <b>TENOR SAX</b><br>Harrell Dunlap<br>Cecile Fuller<br>Franklyn Stillman<br><b>BARITONE SAX</b><br>Dick Hancock<br>Terence Webb<br><b>BASS SAX</b><br>Jack Willhoit  | <b>BARITONES</b><br>Edmond Andrews<br>Mildred Barnett<br>Richard Biscopink<br>Kinsey Chappell<br>Patricia Conlin<br><b>E♭ BASS</b><br>David Cusic<br><b>B♭ BASS</b><br>Bill Jones<br>Mamie Norman   | <b>DRUMS</b><br>Harvey Bragg<br>Pat Callahan<br>Robert Schenck<br>Donald Schnorr<br>Paul Stromberg<br>Bill Whittle<br>Jim Katsikas<br><b>CYMBALS</b><br>Pat Callahan<br><b>TYMPANI</b><br>Harvey Bragg<br><b>BELLS</b><br>Lynnne Cavin<br>Eva Witt | <b>STRING BASS</b><br>Louis Whilden   |





TALLAHASSEE IS PROUD OF ITS ENTRY IN YOUR

# NORTH FLORIDA BAND FESTIVAL



MR. OLIVER HOBBS, Band Director



CHARLES TADLOCK,  
Drum Major

## TALLAHASSEE THEATRES

Florida



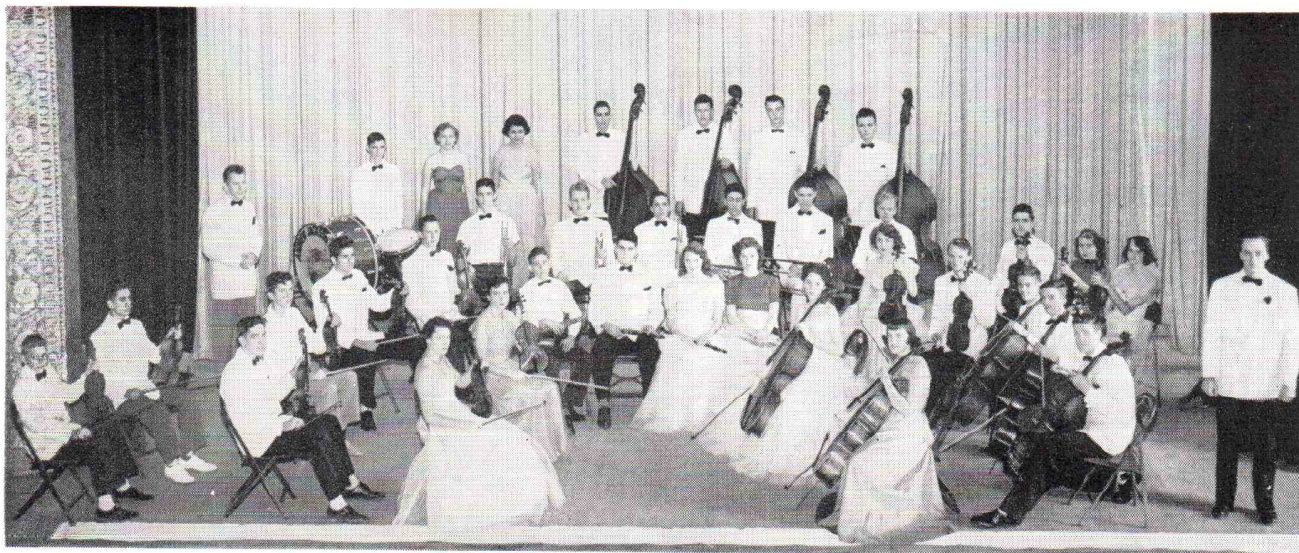
State



Capital Drive-In

and Perry Highway Outdoor





## ANDREW JACKSON HIGH SCHOOL ORCHESTRA

JACKSONVILLE, FLORIDA

James W. Brightwell, Director

### ORCHESTRA ROSTER

#### VIOLINS

Mary Lou Pate  
Dorothy Hutson  
Robert Elrod  
Frederick Paulus  
Dick Stuart  
Charles Satterwhite  
Robert Hazouri

#### VIOLAS

James O'Donnell  
Sandra Nolan  
Bill Contas  
Edna Wright

#### CELLOS

Sarah Prosser

Elaine Coe  
Howard Brigrance  
Everett Boyd  
Lewis Fletcher

#### STRING BASS

Louis Whilden  
Bill Scheffer  
Franklin Ogden

#### FLUTES

David Dunkley  
Frank Freedman

#### CLARINET

Nancy Cobb  
Walter Mackoul

Charlotte Beckley  
Betty Marjenhoff

#### OBOES

Kathleen McElhaney  
Sandra Inches

#### BASSOON

Frank Freedman

#### SAXOPHONE

Richard Hancock

#### TRUMPET

Charles Brightwell  
Donald Stein  
Henry Harris

#### FRENCH HORN

Jim Tillman  
Nancy Buchholtz

#### TROMBONES

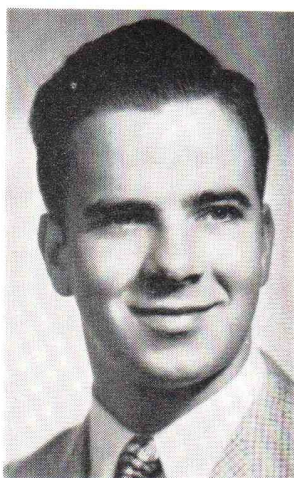
Ronald Stewart  
James Howland  
Kelly Amber

#### TUBA

Frank Freedman

#### DRUMS

Pat Callahan  
Harvey Bragg  
Jim Katsikas



### James W. Brightwell,

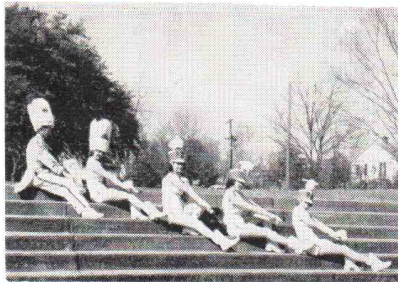
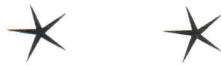
*Director of Orchestra, Andrew Jackson High School*

James W. Brightwell graduated from Andrew Jackson High School in 1950. While at Andrew Jackson he was a prominent member of band and orchestra and took part in all musical functions of the school and community.

His present musical activities include being director of the following organizations: the Andrew Jackson High School Orchestra, the Kirby-Smith Orchestra, and the director of the 310th Army Reserve Band. He is a member of long standing in the Jacksonville Symphony Orchestra and the Jacksonville Philharmonic Orchestra.

Mr. Brightwell will receive his degree in Bachelor of Music Education from the Jacksonville College of Music in August of 1954.





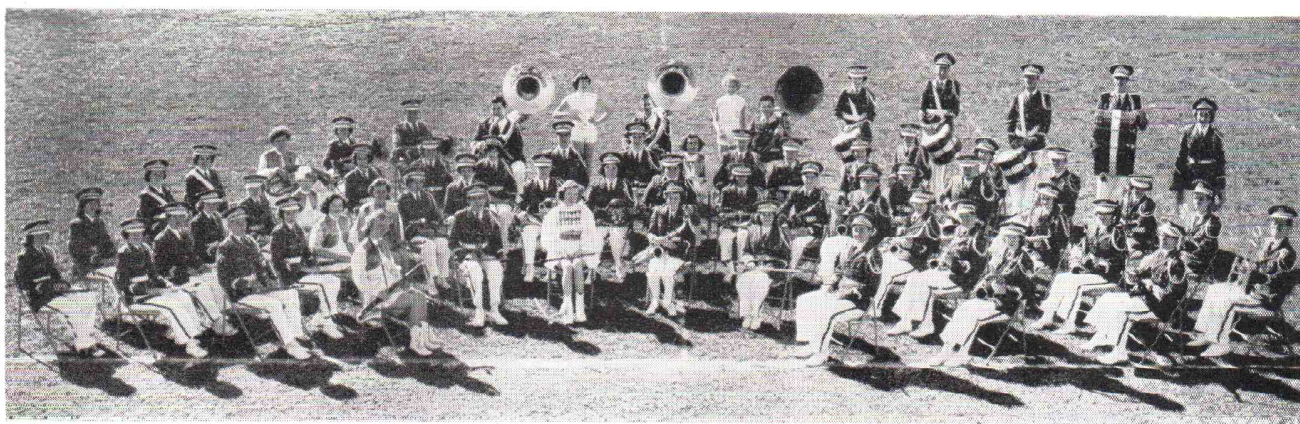
## CHATTAHOOCHEE HIGH SCHOOL BAND

CHATTAHOOCHEE, FLORIDA

**J. Louis Schlegel, III, Director**

The Chattahoochee High School Band was formed by Mr. H. Carlton Mason, Music Supervisor for Gadsden County in 1944. Mr. M. C. Thompson served as the director for a period of three years. Mrs. B. Lamar Watson then took charge of the band and for four years established a fine record for this band at contests as well as many other events. The present director of the band is J. Louis Schlegel, III, a graduate of Stetson School of Music. Mr. Schlegel has continued the fine record of the band thus far and feels sure that with the fine cooperation that this band receives from the people of Chattahoochee it will continue to grow.





## CLAY HIGH SCHOOL BAND

GREEN COVE SPRINGS, FLORIDA

George Dunnivant, Director

The Clay High School Band was organized in March, 1951, by their present leader, George Dunnivant. This Band is the most active organization in the county, taking part in all school and community functions. The Band is three years old and this is its third State contest. The finances to organize the Band were raised by citizens, organizations and students. The Band is now the property of the Clay High School—and the county.



### BAND ROSTER

#### FLUTES

Nelson Geiger  
Dolores Henriques

#### OBOES

Sonya Kenny  
(Drum Major)  
Randall Rowell  
BASS CLARINET  
Alice Andreson (Maj.)

#### CLARINETTS

Don Sohm  
Jean Mincher (Maj.)  
Katherine Flowers  
Shirley Campbell  
Charlene Chevalier  
Lynne Kephart  
Phyllis Brown  
Judith Wright  
Susan Campbell  
Linda Gibson  
Carlene Stiltner (Maj.)  
Coleen Tomes  
Rosa Cooper

#### SAXOPHONES

Betty Duck  
Ronald Holcomb  
Klara Bucholtz  
Charles Grubbs  
Billy Heney  
Juanita Doyle  
Tom Glennan  
Ann Sharpless  
Robert Lewis  
Jan Waters

#### HORNS

Carl Rosenbush  
Polly Maxwell  
Carolyn Geoghagen  
Charlotte Carlton

#### CORNETS

Roger Bryan  
Ed Heney  
Paul Boyette  
Patricia Marcy (Maj.)  
Henry Cope  
Betty Boyette  
Ed Saunders

#### TROMBONES

Carl Johnson  
Tom Swartley  
Bonny Hurlbut  
Bill Boyette  
Sue Houtsma

#### BARITONES

Lucy Swartley  
Bob Gregory

#### BASSES

Jere Llewellyn  
Leland Kinnear  
Fred Hartwell

#### DRUMS

Don Roessling  
Richard Baker  
June Shedd  
Jane Bunch  
Billy Reed  
Nancy Rupert

#### BELLS

Carol Lee Chesser

#### MAJORETTE

Bobby Fountain

Welcome . . .

*Moon's*  
— REGISTERED JEWELERS —  
American Gem Society

Thomasville

Quincy

Tallahassee

*Baker's*

**Band Instrument Service**

**"Everything for Band and Orchestra"**

**Selmer, Olds, Slingerland  
Band Instruments**

● **Repairing** ●

**PHONE 3-0161**

**107 E. Jefferson**

**Tallahassee, Fla.**

***A Message for You . . .***

**DIAL  
2-5510**



# COCOA HIGH SCHOOL BAND

COCOA, FLORIDA

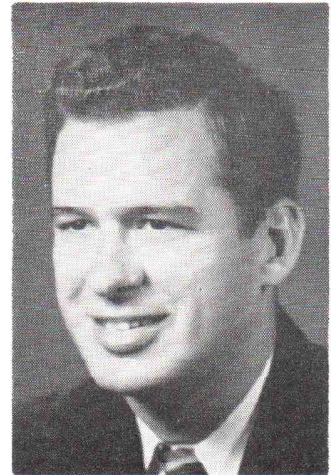
Edward W. Rosevear, Director

The Cocoa High School band was organized in 1947 by Robert Roth. Mr. Roth remained as director until 1953, with Kenneth Dooley acting as assistant director during the 1952-53 season.

Edward W. Rosevear, Chairman District IV, F.B.A., became director of the band in 1953.

The band has shown steady progress, growing to the size of seventy-two members and receiving "superior" ratings in District and State Contests. This year marks the first year that the Cocoa band has competed in "Class B."

Due to the efforts of an active Band Parents Club, the band has just purchased eighty uniforms, costing over \$4,800. A newly-completed high school contains a large band building, complete with rehearsal hall, director's office, instrument storage room, and five practice rooms.



## BAND ROSTER

### FLUTE and PICCOLO

Mary Buck  
Patty Chipman  
Martha Schroeder  
Bob Sellers\*

### E♭ CLARINET

Joan Kovace

### B♭ CLARINET

Renee Abromet  
Ernest Anderson  
Ernest Arveson  
Robert Buck  
Rita Chandler  
Connie Jo Dooley\*  
Berma Doty  
Martha Ann Green  
Jerry Greer  
Pat Hanbury  
Olivia Hodges  
Ted LaRoche  
Wickie Livermore  
Joan Martino

(\*—First chair)

### Barbara Joy Mueller

Ruth Policicchio  
Mary Zimmerley  
BASS CLARINET  
Mary Weathers

### OBOE

Alice Brawley  
Caroline Taylor\*

### BASSOON

Sandy Berghult

### ALTO SAX

Clark Fuller  
Barbara Miller  
Allene Nell  
Lydia Policicchio  
John Shepard\*

### TENOR SAX

Cecelia Faber  
Diane Snell

### BARITONE SAX

Janet Callahan  
Constance Miller

### CORNETS

Harrison Boley  
Larry Dyal  
Danny Jones  
Ronny LaMonica  
Charles Policicchio  
John Stow  
Chuck Thoman  
Darryl Weidler  
Jimmy Wells\*

### FRENCH HORN

Lilly Beckman\*  
Anita Boley  
Loren Kleinfeldt  
Jim Stow

### TROMBONE

Barton Kleinfeldt\*  
Joanne Vincent  
Mary White  
Mark Woodman  
Al Yoder

### BARITONE

#### HORN

Del Butterfield  
Bob Gavin  
Marion Grimes  
Dennis Koile\*  
Jim Thompson

#### BASSES

John Dussich  
Carl McLennan\*  
Jim Sawyer  
Lynwood Watts

#### SNARE DRUM

Bucky Coggin  
Richard Christian  
Betty Joyce Fuller\*  
Edward Harrell  
Poppy Merritt  
Carl Wolary

#### BASS DRUM

Diann Holden

#### TYMPANI

Edward Harrell

### BELLS

Alice Brawley  
Janet Callahan

### MAJORETTES

Mary Buck  
Diann Holden\*  
Wickie Livermore  
Judy McCurry  
Barbara Joy Mueller  
Susie Scott  
Mary Weathers

### DRUM MAJOR

Harrison Boley

### CAPTAIN

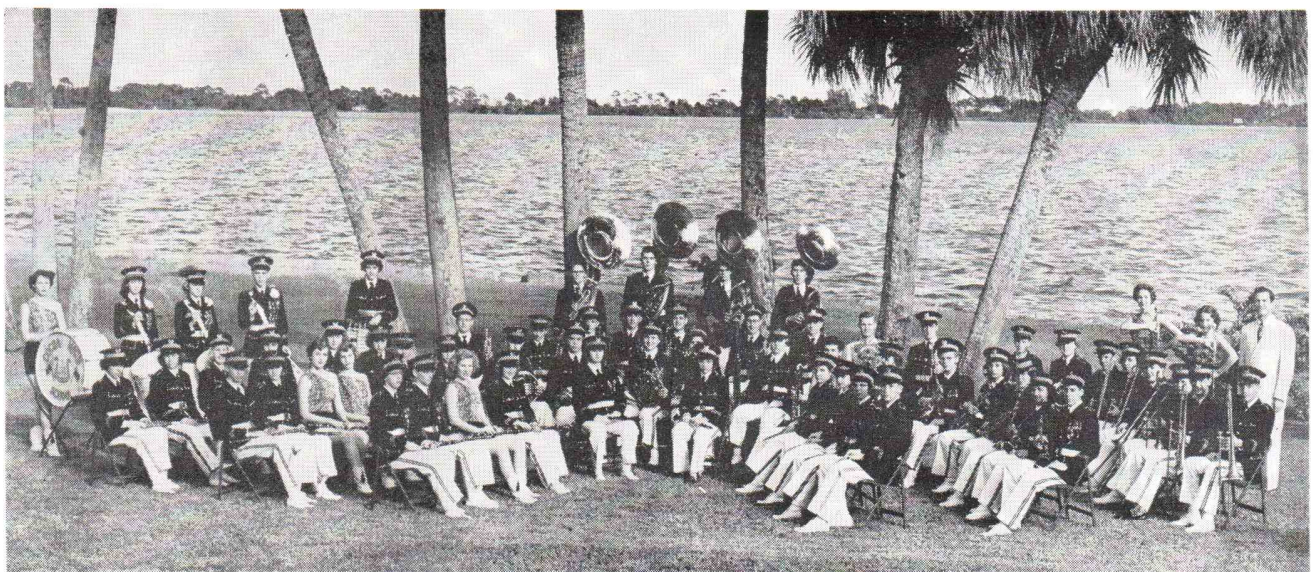
Jimmy Wells

### 1st LIEUTENANTS

Bob Sellers  
Darryl Weidler

### 2nd LIEUTENANTS

Carl McLennan  
Betty Joyce Fuller  
Charles Thoman







## DE LAND HIGH SCHOOL BAND

DE LAND, FLORIDA

John Heney, Director

Peter P. Bukur, Co-director

Dating back to August, 1936, when it was first organized by its present bandmaster, John Heney, the DeLand High School Band has had an active part in band activities throughout the State of Florida and throughout the South.

Entering the first official contest of the Florida Bandmasters Association, held in West Palm Beach, in the spring of 1937, the band received a First Division rating in all competition entered, and has attended every state and national contest to be held since that time.

The good record of the band in West Palm Beach, sent it on to Rock Hill, South Carolina, where the first Region Eight contest was held. The date was June of 1937 and the place was Winthrop College.

The band was inactive during the war years and did not stand inspection.

The band is housed in its own building, the first band hall in Florida.

Mr. Peter P. Bukur, a graduate of Stetson University, is now co-director of the band.

### BAND ROSTER

#### CORNETS

Celestina Gifford  
Lucy Rand  
John Myers  
Frank Schmit

#### HORNS

Jacquelyn Leitner  
Joanne Caldwell  
Judith Grady

#### TROMBONES

Jackie Robinson  
Brinly Carter

#### BARITONE

Charles Bartling

#### BASSES

John Carter  
Oran Lambing

#### CONTRABASS

Roy Kartzmark, Jr.

#### DRUM

Anthony Dalbo

#### TYMPANI

Dorothy Cubsted

#### FLUTES

Mary Heney  
Marga Larson

#### OBOE

Nancy McCallum

#### BASSOON

Wayne Fisher

#### CLARINETS

Willa Schmit  
Margaret Mott  
Ann Taylor  
Margilyn Aldred  
Barbara Harper  
Carol Clay  
Beverly Brackett

#### BASS CLARINET

Nancy Lee Evans

#### TENOR SAXOPHONE

Raymond Gallahan



# FLETCHER HIGH SCHOOL BAND

JACKSONVILLE BEACH, FLORIDA

Josef Oszuscik, Director

The present Fletcher Band was re-organized by Josef Oszuscik when he joined the faculty in September, 1953, coming to this school from Landon High School in Jacksonville where he was Director of Orchestra and associate Band Director. A band organization existed at Fletcher school for some six or seven years. Mr. Oszuscik succeeded O. M. Esslinger. This is the first time this band has qualified to participate in the State Band Festival.

Mr. Oszuscik received his undergraduate (B.M.) degree from VanderCook College of Music (Chicago) in 1939. His Master of Music degree was earned at Northwestern University (Evanston) in 1949 where he majored in music education and minored in theory and clarinet. His additional college training was accomplished at DePauw University, Indiana University, Mississippi Southern College, and University of Florida Extension.

He taught at Emerson High School (Cary, Ind., 1935-39), woodwind clinician at Hardin-Simmons University (Abilene, Texas), and at West Texas State Teachers College (Canyon, Texas), Director of Instrumental Music in Hattiesburg, Miss. public schools (1939-48), Director of Music, Walton County High School in DeFuniak Springs, Florida (1948-52). While in Hattiesburg, Mississippi he also taught at Miss. Southern College.

Participating actively in his profession, he is a Life Member of M.E.N.C. — serving three times on national M.E.N.C. committees — (Patriotic Music, 1944-46; Contemporary Music, 1946-49; and Music Education in the Community, presently). He was chairman of the State Contemporary Music Committee last year. He is a member of American Musicological Society, Phi Mu Alpha Sinfonia, a member of Jacksonville Symphony Orchestra, a contributor of articles in various professional magazines, and is listed in "Who Is Who in Music."

## BAND ROSTER

David Conway  
Evan Evans  
Joan Joannides  
William Leaptrott  
Ronald Morse  
Julian Rose  
Mary Joe Sistrunk  
Sandra Spruill

Lucy Turner  
Billie Warren  
Bob Clark  
Harley Henry  
David Smith  
Jarvis Allen  
Peter Davis  
Hugh Rawls

Roger Rose  
James Brown  
Ernie Porter  
Joe Sasser  
G. W. Hartley  
John Deam  
Bruce Clark  
James Allison

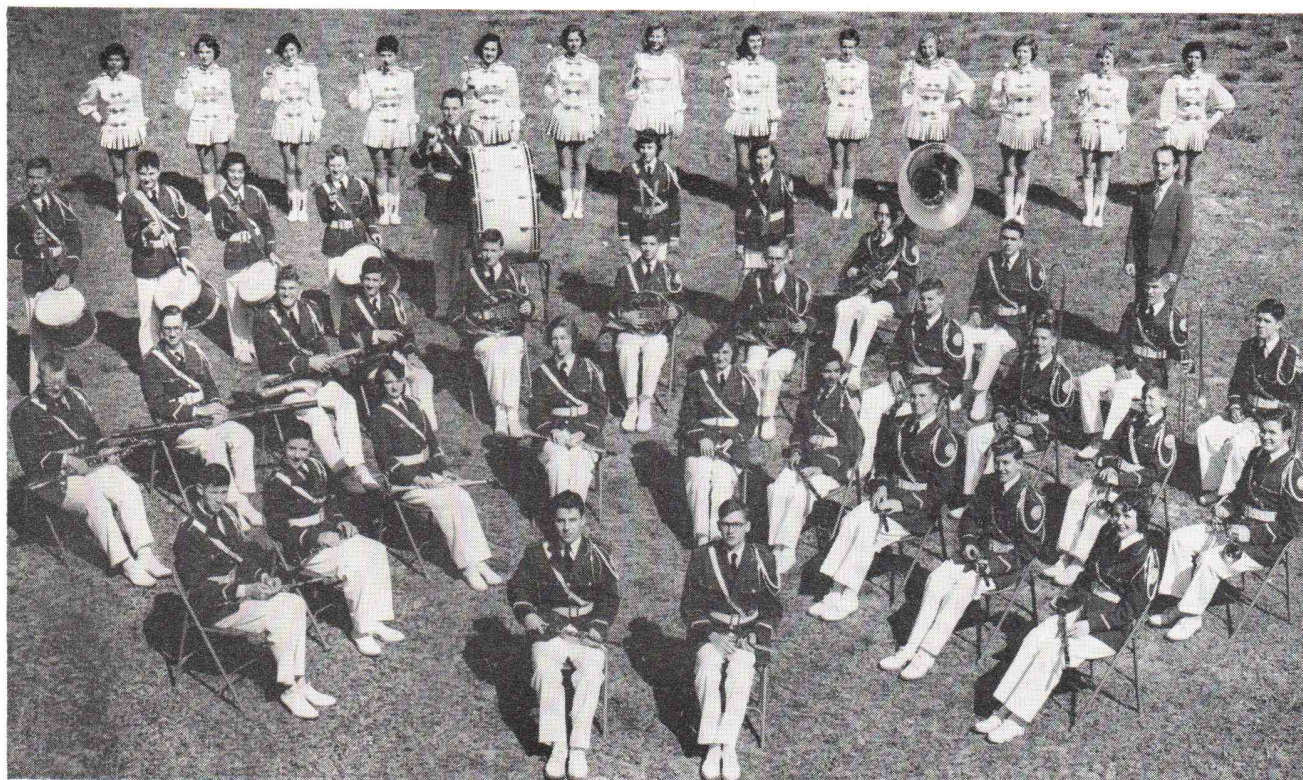
William Colley  
Leo Mack  
Howell Sasser  
Pat Hammond  
David Harper  
Lloyd Krestensen  
Austin Smith  
Lester Yeomans

Pat Echard  
Ann Read

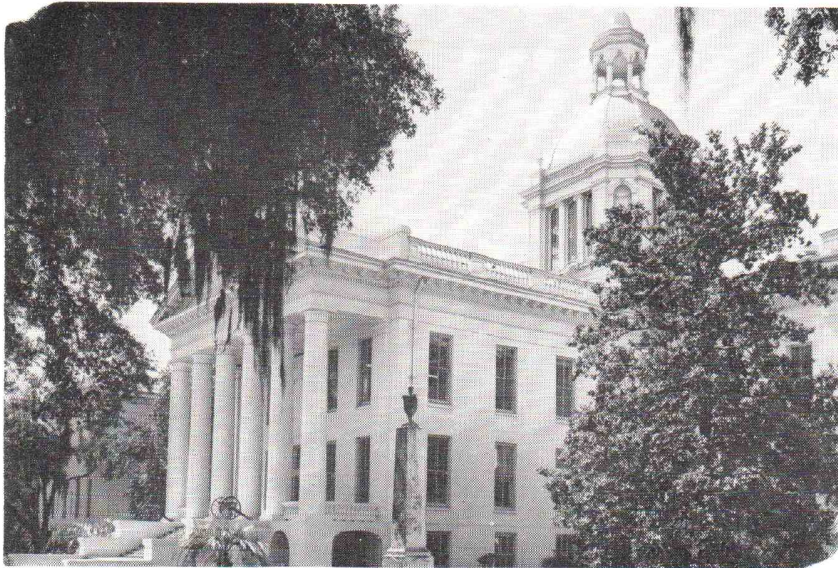
### MAJORETTES

Marilyn LaVigne  
Lucy Chao  
Cathy Cown

Frances Daniels  
Lucy Gregory  
JoAnn Leino  
Luann Medlock  
Margie Parkison  
Betti Owen  
Patti Quigley  
Diane Queen







The State Capitol

TALLA  
Your Co



Supreme Court  
Building

Governor's Mansion

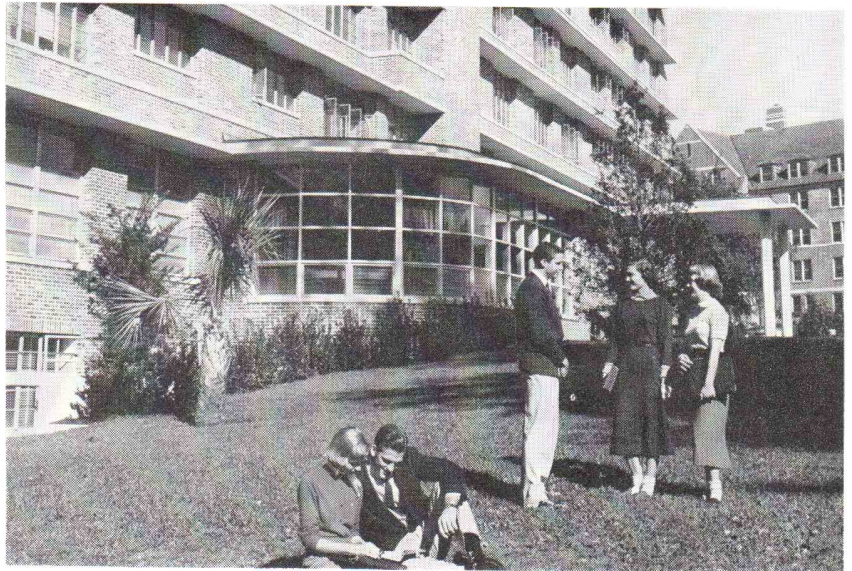


the S  
at it

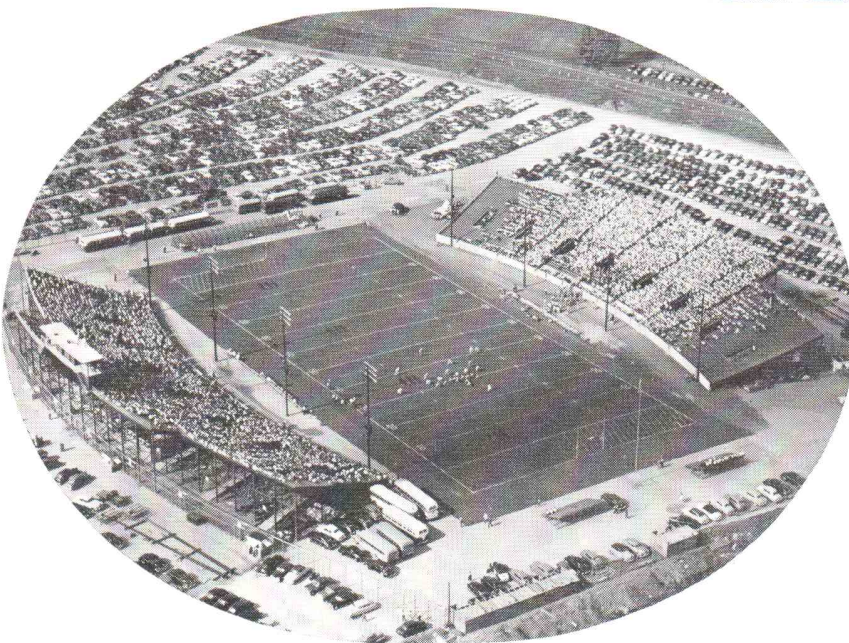


# HASSEE

*ital City*

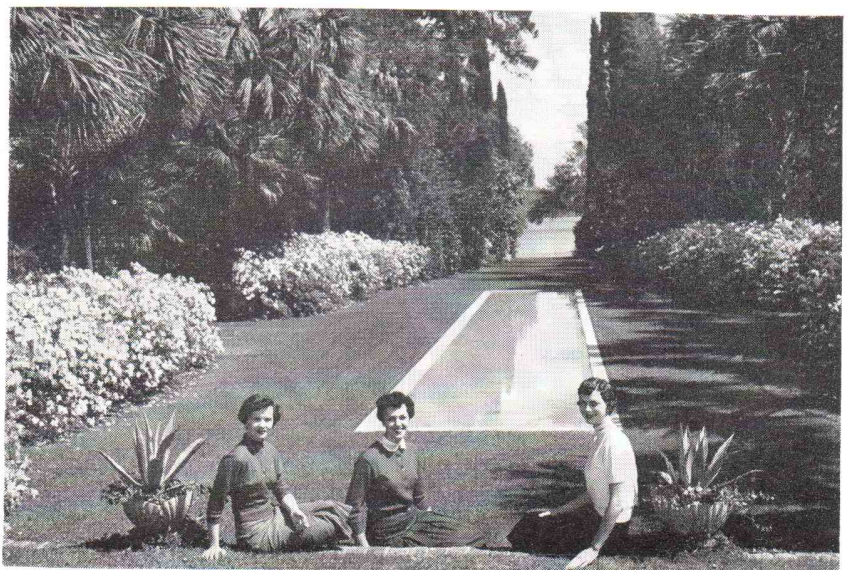


Florida State University Campus



Doak S. Campbell  
Stadium

Killearn Gardens



*thland*  
*Best!*





## GADSDEN COUNTY HIGH SCHOOL BAND

QUINCY, FLORIDA

Carlton Mason, Director

The Quincy High School Band was organized October 1, 1940, by its present director, Carlton Mason. It is composed of 70 members and competes in Class "CC." The band has placed in First Division in its class since its organization, in both playing and drilling.



Mason

### BAND ROSTER

Judy Woodward  
Mary Jo Moses  
Mary Katherine Miles  
Hilda White  
Nancy Jacobs  
Betty Jo Haire  
Lois Ann Chandler  
Annette Hardee  
Margaret Lou Warren  
Hazel Hardin  
Jeanette Clark  
Miles Womack  
Mary Sue Wells  
Jackie Johnson  
Georgianna Clark  
Mary Betts  
Bill Sapp  
Alton Towles  
John Hinson  
Clay Cox  
Emily Bridges  
Billy Bedenbough  
Gloria Scott  
Sue Ann Lowery

Martha Sullivan  
Chris Holman  
Mary M. Woodward  
Helen Clark  
Thelma Strickland  
Ruth B. Munroe  
Sue Peacock  
Sandra Betts  
Annette Wadell  
Edward Woodberry  
William Woodberry  
Tenney Deane  
Bobby Carraway  
Kent Morris  
Henry Rollins  
Buddy Jones  
Larry Dean  
Billy Brinks  
Sherry Straughn  
Tamsey Fain  
Randal Kincaid  
Bill Deane  
Charles Mahaffey  
Tommy Powell

Jennie Chandler  
Margaret Clark  
Ralph Jackson  
Sarah Lee Kincaid  
Bill McKeown  
Sherman Overby  
Paul Moses  
Bobby Owens  
John Patronis  
Page Lines  
Angelia Harbin  
Millard Paul  
Earl Perry  
Barbara Durham  
Buddy McCall  
Louise Parramore  
Sally Wells  
Barbara Warren  
Mary Thompson  
Theresa Larsen  
Jo Ann Maynard  
Betty Sue Carpenter  
Peggie Parramore





## GAINESVILLE HIGH SCHOOL BAND

GAINESVILLE, FLORIDA

**Bardwell M. Donaldson, Director**

The Gainesville High School Band was organized in 1946 under the very capable leadership of Bardwell M. Donaldson. During the first year the Band attended the District Five Band Contest and received two first division ratings in Class D.

Since that time the Band has consistently won first division ratings in District Contests and is now this year entering its eighth State Contest under its present conductor, Mr. Donaldson, since the Band was organized eight years ago.

The Band earned 15 first division ratings in this year's District Contest.

Bardwell M. Donaldson, the director, received his Bachelor of Music degree from Stetson University in 1941 and the Master of Arts degree from the University of Florida in 1950. He spent three years in the U. S. Navy with the U.S.S. Essex Band. He played bassoon twelve seasons with the Daytona Beach Municipal Band and two seasons with the Central Florida Symphony Orchestra.

Mr. Donaldson was director of the Titusville High School Band for two years, director of the Chipley High School Band for one year, and chairman of F.B.A., District number Five for two years.

The band this year has also recorded twelve 30-minute broadcasts for radio station WRUF, the voice of the University of Florida in Gainesville.

### BAND ROSTER

**FLUTES**  
Sylvia Asbell  
Sadie McLucas  
Kristin Duerloo  
Sandra Dixon

**OBOES**  
Eddie Canova  
Deleva Montgomery

**BASSOON**  
Eleanor Lang

**BASS CLARINET**  
Sue Brooker

**CLARINETS**  
Betty Allen  
Ancil Payne

Walter Wynn  
Frances Hill  
Jody Kelly  
Jack Fagan  
Martha Johnson  
Tom Donaldson  
Tommie Lambeth  
Laura Kolar  
Bill Kelly  
Mike Beegle  
Beverley Fulton  
Judy Wallace  
Emily Simmons  
Pat Bailey  
Charles Sieg  
Jeanne Rogers  
Jill Whitehead

**ALTO SAXES**  
Peggy Hughes  
Delores Warren  
Joanne Oneal

**TENOR SAX**  
Roger Shields

**BARITONE SAX**  
Buck Grinter

**CORNETS**  
Jimmy Young  
Bill Hinkley  
Marilyn Hughes  
Madeline Bruner  
Phil Sparks

Dale Perry  
Ken Read

**FRENCH HORNS**  
Ann Stapleton  
Mason Carmichael  
Jimmy Valk  
Jo Anne Bush  
Mary Pearce

**TROMBONES**  
Bob Fulwood  
Eleanor Simmons  
Ann Grossman  
Rosalie Kopelowitz  
Jack Whitehead  
Tommy Martin

**BARITONE**  
Charles Oneal

**BASSES**  
David Stewart  
Billy Hester  
Jack Beckenback

**DRUMS**  
Sarah Baughan  
Libby Beall  
Maureen Cass  
Marlene Haven

**TYMPANI**  
Margaret Higley





## GREENSBORO HIGH SCHOOL BAND

GREENSBORO, FLORIDA

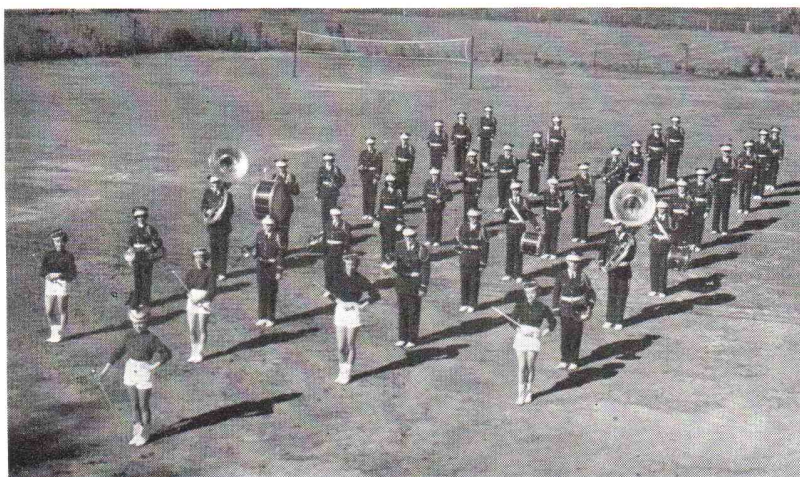
Jeff Bradford, Director

### BAND ROSTER

Miriam Dean  
Alice Faye Smith  
Anna Lois Clark  
Ann Perkins  
Deanne McPherson  
Ann Fletcher  
Ellen Phillips  
Sandie Smith  
Carol Haire  
Virginia Dean  
Rena Dean  
Mary Jean Butler  
Carolyn Clark  
Larry Haire

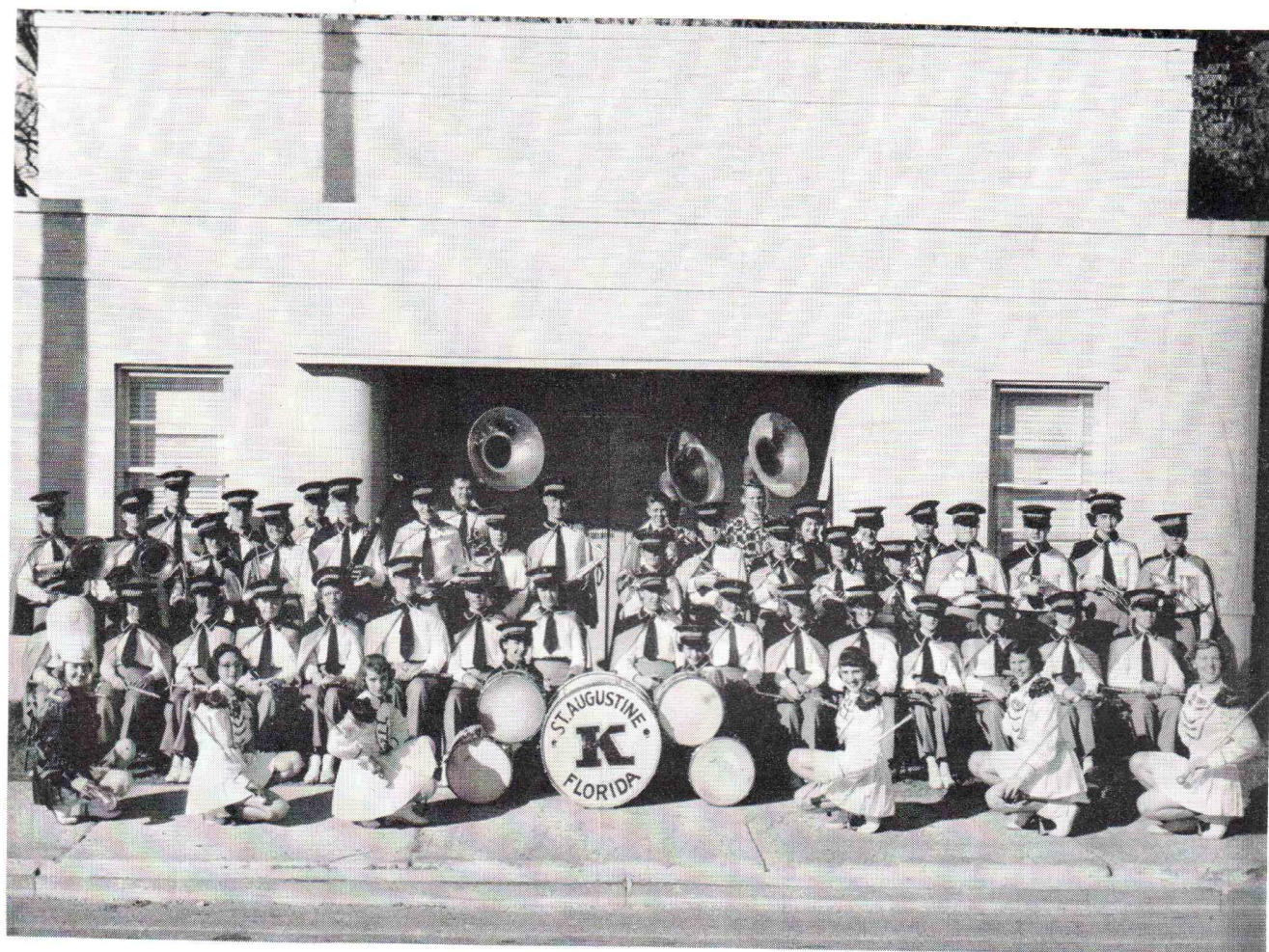
Lynette Bowen  
Ann Holland  
Roger Smith  
Eulalie Cox  
Jerry Smith  
Luther Bowen  
Jimmy Hoffman  
Jimmy Clark  
Nelson Clark  
Sarah Boyd  
Samuel Fenn  
Carolyn Rowan  
Laverne Hill  
Larry Crosby

Byron Rudd  
George Rudd  
Wayne Bowen  
Scott Clark  
Jerry Butler  
Margaret Blount  
Ruben Morgan  
Geraldine Weeks  
Edward Rowan  
Shirley Hopkins  
Jean Ogilvie  
Bertie Mae Shiver  
Jewel Shiver



Bradford





## KETTERLINUS HIGH SCHOOL BAND

ST. AUGUSTINE, FLORIDA

H. M. King, Director

### BAND ROSTER

|                 |                  |                  |                  |
|-----------------|------------------|------------------|------------------|
| Fred Boska      | Jean Arnold      | Jean Pope        | Ann Cochran      |
| Lois Steinecke  | Andrea Jenkins   | Dolores Kennedy  | Betty Jo Andrews |
| John King       | Thelma Jordan    | Jimmy Seaman     | Joan Bush        |
| Sylvia Swindull | Martha Sterchi   | Fred Jacobs      | Betty Jaillette  |
| Miller Kerr     | Shirley Usina    | Harold Kendricks | Jimmy Shearouse  |
| Joan Standiford | Barbara Taylor   | Jackie Bennett   | Roger Daniels    |
| Rita Tart       | Peter Finch      | Susan Webb       | Lew Bennett      |
| Judy Phipps     | Margret Robinson | Jimmie Brooks    | Ray Barker       |
| Ann Sasser      | James Ogier      | Van Lindsey      | K. Wasson        |
| Edna Rahn       | Anita Anderson   | Dwight Smith     | Bobby Sheperd    |
| Marlyn Grace    | Billy Carter     | Dan Jenkins      | Barbara Tindall  |
| Marie Wolfe     | Ione Perry       | Charles Till     | Mary Coxe        |
| Judy Manucy     | Kenneth Prine    | Richard Hersey   | Donna Cowart     |
| Alez Hogle      | Silvia Todd      | Darla Flautt     | Sharon Ponce     |



# LANDON HIGH SCHOOL BAND

JACKSONVILLE, FLORIDA

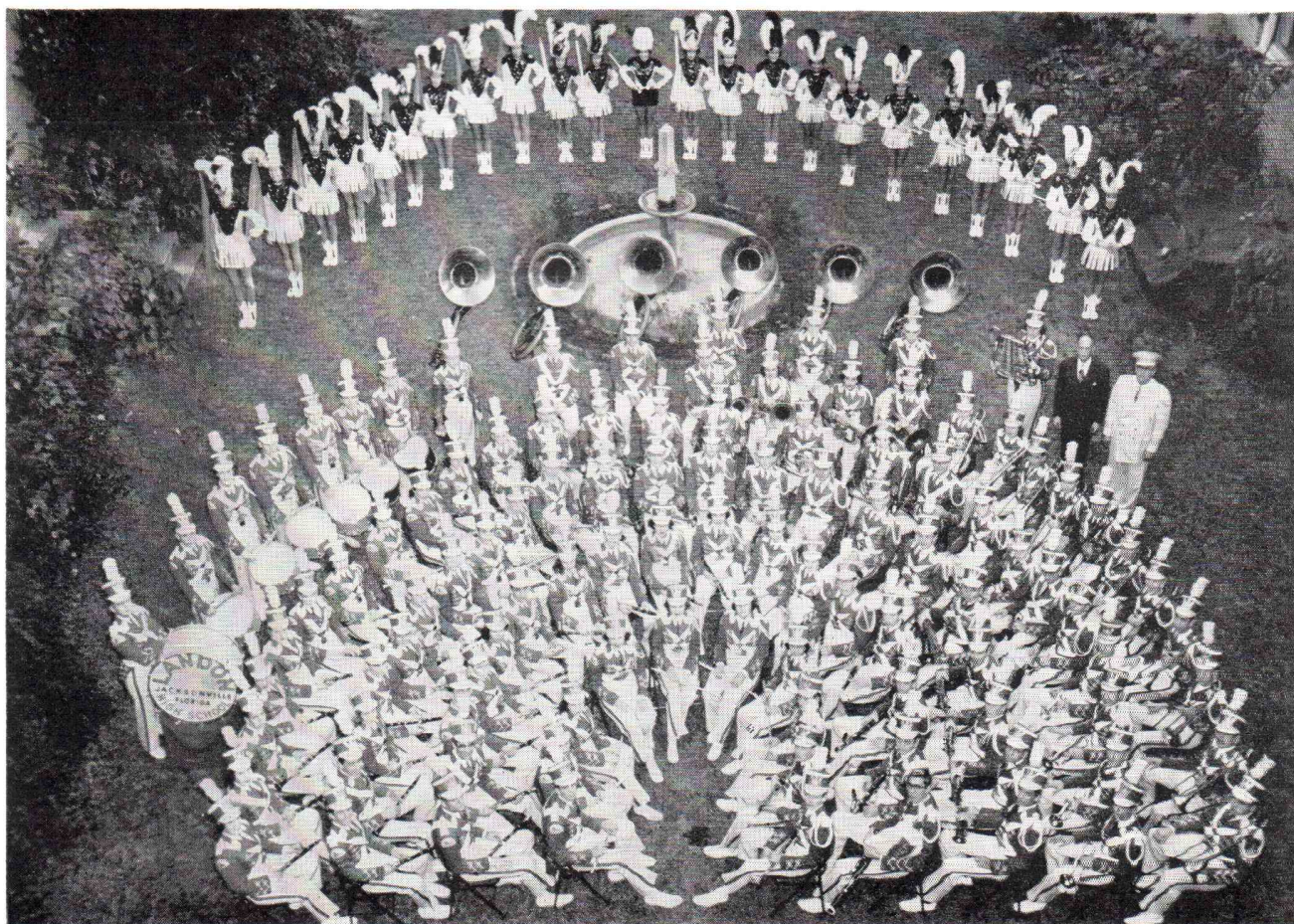
**Edwin Cook, Director**

In September of 1949 the Landon Band was re-organized under the direction of its present Director, Edwin T. Cook. At that time the band had less than 30 members in it. Today after six years there are slightly over 300 students in the Landon Instrumental Music Program. The Program was given a big lift by the Landon Dad's Club in 1950 when they gave the Band \$7500 for new uniforms. Since then the Landon Band has made many fine trips to such cities as Miami, Orlando, Tampa, St. Petersburg, Lakeland (twice), Tallahassee, West Palm Beach, Gainesville, Washington, D. C. for the School Boy Patrol Convention, and just last fall the Landon Band Booster's Club sent the Band to Chattanooga, Tennessee.

In 1952 the Landon Band earned three superior ratings in the District 5 FBA Contest. The same year it came back from the State Contest held in Tampa with straight superior ratings. Last year the Landon Band won again three ratings of Superior in the District Contest and repeated straight Superior Ratings in the State Contest held at West Palm Beach.

The Landon Band is very proud of its fine Booster Club that has done so much to help the Band not only with trips and instruments but all the many things it takes to help turn out a top-notch band year after year.

The Band Director, Edwin T. Cook, holds a B.S. and M.S. degree from Ithaca College. Before coming to Jacksonville, Florida, Mr. Cook was Director of Bands for five years at the Owego Free Academy, Owego, New York, and also Director of Bands at Jefferson Central School, and Davenport Central School in New York for one year each.







## LEON HIGH SCHOOL BAND

TALLAHASSEE, FLORIDA

**Oliver Hobbs, Director**

The Capital City Band, which is now the Leon High School Band, was organized in 1924 with Mr. Frank A. Fitch as Director. Mr. Fitch remained as band director until 1932 when he was succeeded by Joanos P. Koscielnny. During Mr. Koscielnny's directorship, the band attended the World's Fair in Chicago.

In 1940, Mr. Romulus Thompson was appointed band director. The band, under Mr. Thompson, attended the Lions International Convention in New York City in 1949. Mr. Oliver Hobbs, the present band director, succeeded Mr. Thompson in 1950. Drum major this year is Charles Tadlock.



**Tadlock**



**Hobbs**



*Turner's*

"doorway to fashion"

TALLAHASSEE, FLORIDA

COMPLIMENTS

TALLAHASSEE AUTOMOBILE  
DEALERS ASSOCIATION



*Borden's*  
DAIRY PRODUCTS

2036  
N. MONROE  
•  
PHONE  
2-4145

Welcome Members & Visitors  
To The Florida Band Festival

May your stay  
be pleasant  
and your return soon.

COX FURNITURE CO.

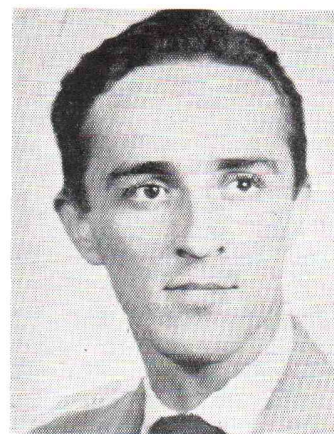
"A Little Out of the Way, But a Lot Less to Pay"

THOMASVILLE ROAD

PHONE 2-4070



Elwyn D. Brown, present director of the Madison High School Band, received a Bachelor of Music degree from Stetson University in 1950. Prior to that, he served two years in Navy bands, including a year as instructor at the Navy School of Music in Washington. His experience covers many fields of instrumental music ranging from dance and show bands, to membership in the Central Florida Symphony for two years.



**Brown**

## **MADISON HIGH SCHOOL BAND**

**MADISON, FLORIDA**

**Elwyn D. Brown, Director**

The Madison High School Band reached its peak in 1943 under the direction of Pat Slaughter. Its progress was severely hindered by the war, causing it to disband. In 1948 Miss Charlotte Steele reorganized the Band which attended the District Contest in 1949. Mr. Joseph W. Courson succeeded Miss Steele as director in 1950. In 1951, Mr. Elwyn Brown, the present director, became director of the Band. The Band then participated in the Contest events for the first time since 1949.

Currently the Madison Band has participated in the "Gator Growl," the Inaugural Parade and all local football games and parades. An organization within the Band is the Madison High School Pep Band. This Band plays for pep rallies and events which would be inconvenient for the full Band to participate in.





## MUSIC!

We specialize in printed music of all types and from all publishers. Anything in music you need can be procured from us. Approval service if desired.

---

### HAVE YOU SEEN OUR NEW DRUM BOOKS?

1. Little Champ First Year Drum Solos—Schinstine.... \$1.50  
(25 easy first year solos to use with any first year method).
2. Drum Ensembles for All Occasions, Schinstine & Hoey \$1.50  
(A fine variety of numbers, from duets to full percussion section).

## Southern Music COMPANY

1100 Broadway

San Antonio, Texas

The

## Dutch Kitchen

serving . . .

### *Luncheon Specials* from 55c

prepared with the same  
care as our famous . . .

### Complete Dinners

Located on the Corner of Adams and Park



TALLAHASSEE COCA-COLA BOTTLING CO.





## MELBOURNE HIGH SCHOOL BAND

MELBOURNE, FLORIDA

**Dorothy L. Parker, Director**

The Melbourne Band participated in National and State Contests 1938-41, and was consistently awarded a First Division Rating. From 1941-45 the band was at a standstill, and dropped in enrollment from 20 pieces to a seven-piece band. The band is now in its ninth year of reorganization under Miss Dorothy Parker. Mr. A. V. Catterton, Ex-Marine Sergeant, manager of the Melbourne Radio Station, and Mayor of Melbourne, is the drill master for the band.

The band had the privilege and pleasure of representing the Florida State Lions at their National Convention in New York the summer of 1946-47, as the official Florida Band; in 1950-51 the band took part in the annual Orange Bowl Festivities in Miami.

The Melbourne Band has consistently won first divisions in Concert and Drill at District Contests since 1946-47, and FIRST Division in Drill and never less than a second in concert at State Contests. In 1949-50 the band placed FIRST on CONCERT and DRILL at State Contest in Miami. The band received all First Divisions 1950-51 in all District entries; sight-reading, concert, drill, and all soloists, but chose to take a three-day tour of the state, instead of going to State Contest. In 1951-52 the band received all First Division ratings in District and State Contests, and in 1952-53 made First Division in all District Contest Events, but took a three-day tour of Atlanta, Georgia, instead of going to State Contest.

The Director, Dorothy L. Parker, is a graduate of the University of Illinois. She taught in Missouri; was a member of the Missouri State Board of Music; Director of Instrumental music in Shelby, N. C., and Secretary of North Carolina Bandmasters Association; served as Dean of Girls and Instructor at Transylvania Music Camp, Brevard, North Carolina. For the past five summers Miss Parker has been Instructor and Dean of Girls at Miami University (including serving as Assistant Camp Director) and this summer will serve in the same capacity. In 1951-52 she served on the Florida State Evaluating Board, and in 1950 she served as Adjudicator for District Band Contest—District One, Miami.



**Capital  
Office  
Equipment  
Company**

"Tallahassee's Most Complete  
Office Outfitters"

TALLAHASSEE  
FLORIDA



P. O. Box 641

PHONE 2-0699

Wholesale Distributors of  
SANDWICHES

SALTED PEANUTS — PEANUT BUTTER  
SANDWICHES — POTATO CHIPS — POPCORN  
COOKIES — CANDY



*Welcome to Tallahassee!*

Visitors and Friends of

**The Florida Band Festival**

SEARS ROEBUCK & CO. — Satisfaction Guaranteed or Your Money Back



S. Frederick Worman, present director of the Milton High School Band, received his training as a bandmaster from the late Edward S. Calhoun, organizer and director of the 103rd Cavalry Band.

Mr. Worman served as director of the Danville Community Boys' Band, Danville, Pennsylvania, after the death of Mr. Calhoun, organizer of the unit. Subsequently, upon graduation from Bloomsburg State Teachers' College, Bloomsburg, Pennsylvania, in 1941, he was employed as band director at Harris High School, Spruce Pine, N. C. After one year in a similar capacity at West Pittston, Pennsylvania, he accepted the position as bandmaster at Chapman High School, Apalachicola. After a two-year tenure there, Mr. Worman assumed the band directorship at Milton in 1947, and is now serving his seventh year as director of the Milton High School Band.

## MILTON HIGH SCHOOL BAND

MILTON, FLORIDA

**S. Frederick Worman, Director**

The Milton High School Band was organized in 1939 by Captin Joe Astoria, who remained as director of the organization for seven years. He was succeeded by Miss Dorothy Wamble.

In the fall of the following year, 1947, the present bandmaster, S. Frederick Worman, assumed directorship of the Milton Band. The organization was subsequently completely reorganized, presently performing with a complement of forty-five playing members and a corps of eight majorettes.

In addition to performing at all football games and participating in many community parades, the band each year presents a series of concerts. It represented Santa Rosa County in the Warren and McCarty gubernatorial Inaugural Parades in Tallahassee. In 1941, the organization, representing then Governor-elect Millard Caldwell, led the Inaugural procession. In November, 1951, October, 1952, and October, 1953, the Band traveled to Tallahassee to participate in Florida State University's Band Day festivities.

The Band becomes a class "B" organization this year for the first time.

### BAND ROSTER

**Flute:** Sue King

**Clarinet:** Donnie Allen, Ronnie Gillman, Betty Jane Stewart, Gail Park, Pat Bodie, Clayton Barnes, Ronnie Sanders, Peggy Perkins, Jane Miller, Janice Jernigan, Janet Hayes.

**Saxophone:** Buddy Mayo, Mary Evelyn Spencer, Wanda Givens, Joyce Peaden

**Cornet:** Bob Spencer, Burt Locklin, Hurley Manning, Bud Barnes, John Malone, Frank Vanlandingham, Roger Gillman, John Allen, Haywood Hanna

**French Horn:** Audrey Price, Maureen Presley, Anita Lewis, Ann Brown.

**Trombone:** Bill Hayes, Moxley Lockett, Jane Williams, Barbarah Norris, Helen Youngblood.

**Baritone:** Jack Hendricks

**Bass:** Jimmy Johnson, Harold Brown

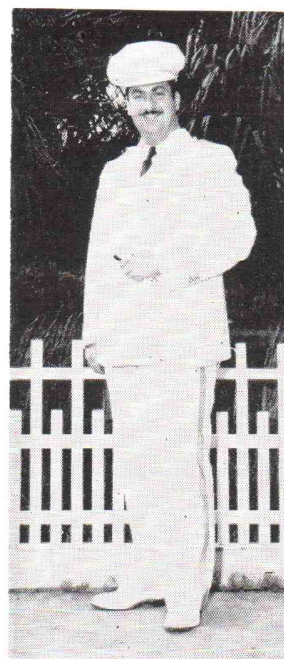
**Percussion:** Jo Davis, Mary Elizabeth Johnson, Jane Davis, Charles Stephens, Reuben Grimes.

**Majorettes:** Joy Barnes, Annelle Bush, Mary Evelyn Spencer, Rebecca Simpson, Sue Carroll, Joyce Stephens.

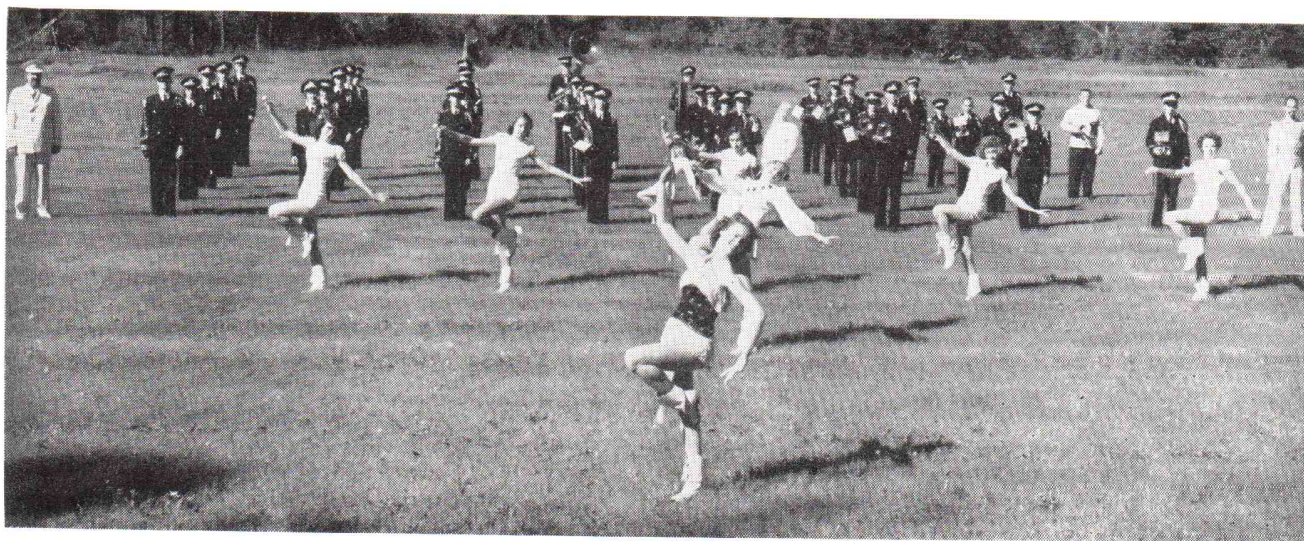
**Majorette Mascots:** Elizabeth Osborne, Sylvia Malone, Shirley Elliott

**Drum Majorette:** Toni Mallory

**Drum Major:** Marvin Ates



Worman





**2**  
**FAIVERS**

**Drive-In Restaurants**

**TO SERVE YOU**

**1**—Across from new 11-story boys'  
dormitory on West Tennessee

**2**—On South Monroe

**"Everything . . . From A  
SANDWICH . . . To a STEAK"**

**Compliments of**

**DANLEY FURNITURE  
COMPANY**

**"We Make Your House a Home"**

**611 N. MONROE**

**PHONE 2-3544**

***Welcome to the Band Festival . . .***

***Welcome to . . .***

**P. W. WILSON CO.**

***Tallahassee's Favorite Department Store***

**SINCE 1837**

**FASHIONS FOR MEN . . . WOMEN . . . AND CHILDREN**



# NEW SMYRNA BEACH HIGH SCHOOL BAND

NEW SMYRNA BEACH, FLORIDA

W. R. Snowden, Director

In 1948 Charles J. Parker came to New Smyrna Beach and re-organized the band. The group participated in its first festival in 1950, receiving a First Division in Class D.

In 1950, W. R. Snowden replaced Charles Parker as Band Director. There is much interest in band and instrumental music, and the department has grown and improved steadily.

The band takes an active part in all school events and participates in many community functions.

## BAND ROSTER

### FLUTES

Kay Beaty  
Elizabeth Hoffman  
Ramona Mosher  
Patsy Shaw  
Kay Unser

### OBOE

Frances Hall

### BASSOON

Jimmy Conley

### BASS CLARINET

Robert Harmon

### ALTO CLARINET

Martha Hardin

### Bb CLARINETS

Pat Beeman  
Robert Cook  
Patsy Drawdy  
Pat Leary  
Alice Mickler  
Roy Roberts  
Mary Ann Sawyer  
Sue Warren  
Eileen Zimmel  
Lois Zimmel

### ALTO SAXOPHONES

Christina Bogdon  
Jean Hofreiter  
Frances Lee

### TENOR SAXOPHONE

Earl Willis

### BARITONE

Elizabeth Tumblin

### FRENCH HORNS

Jimmy Deloach  
Burton Jordan  
Nettie Jane Kennard  
Bill Mears

### BASSES

Ronnie Bell  
Bill Logan

### BARITONES

Kent Finley  
Jimmy Gilliam

### CORNETS

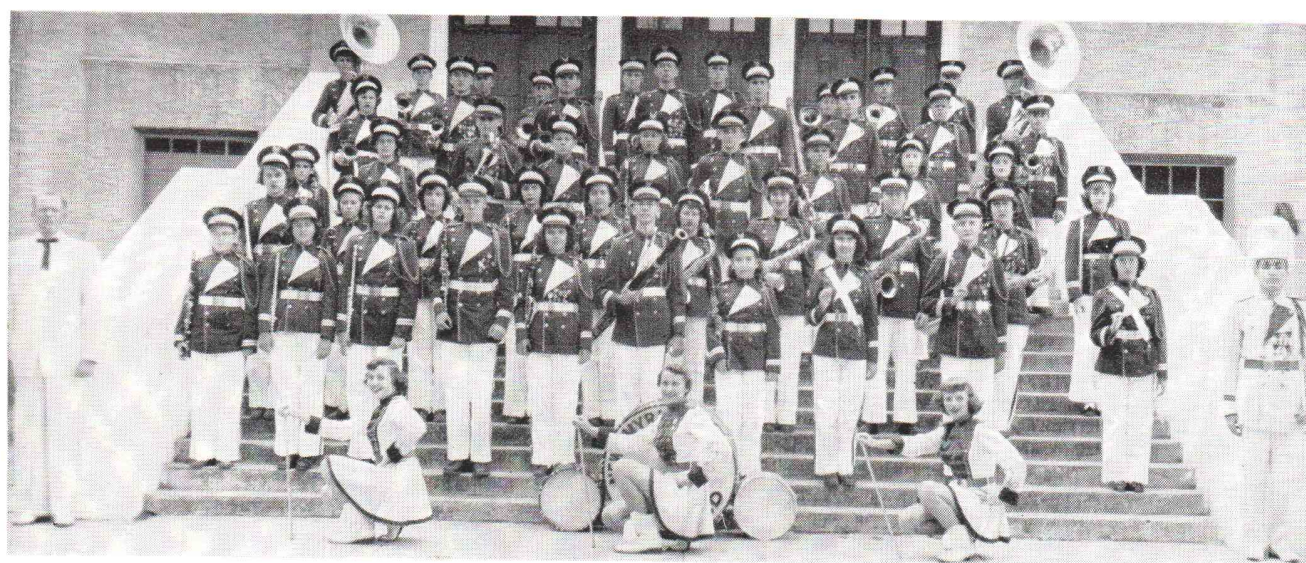
Freddy Chandler  
Andy Crawford  
Helen Graver  
Bobby Hawkins  
Steve Hester  
Dennis Matthew  
David Neeley  
James Peguesse

### TROMBONES

Joe Benedict  
Elwyn Fretwel  
Joe Huskey  
Bobby McGibboney  
Charles Reed  
Joe Watkins

### PERCUSSION

Nancy Bogdon  
Linda Harper  
Barbara Hayek  
Kenneth Taylor  
BELL LYRE  
Annette King





*Welcome* . . . **BAND MEMBERS**  
to

**Florida's Capital City . . .**

*Home of F.S.U.*



## **TALLAHASSEE LODGING ASSOCIATION**

### **— MEMBERS —**

Bowman's Auto Court  
Cactus Motel  
Capital City Motor Court  
Cherokee Hotel  
Colonial Hotel  
Duval Hotel  
El Ranch Motel  
Flagstone Motor Court  
Fairfield Court  
Floridan Hotel  
Flournoy Motor Court  
Gandy Motor Hotel  
Gulf Wind Motel  
Kinsey Motor Court

Kline's Guest Home  
Messer's Motor Court  
Lake Ella Motor Court  
Park Hotel  
Pine Post Motel  
Ship Lantern Motel  
Southland Motel  
Stone Hotel  
Sunset Motel  
Tallahassee Motor Hotel  
Tallahassee Motor Lodge  
Azealea House  
White House Hotel Apts.  
University Motel

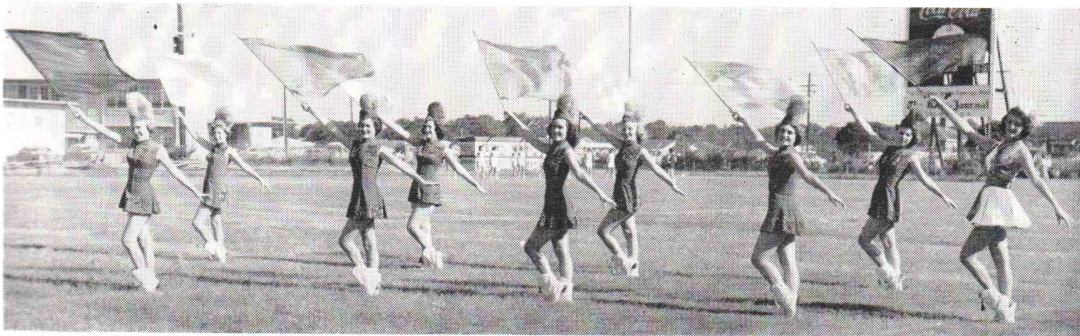
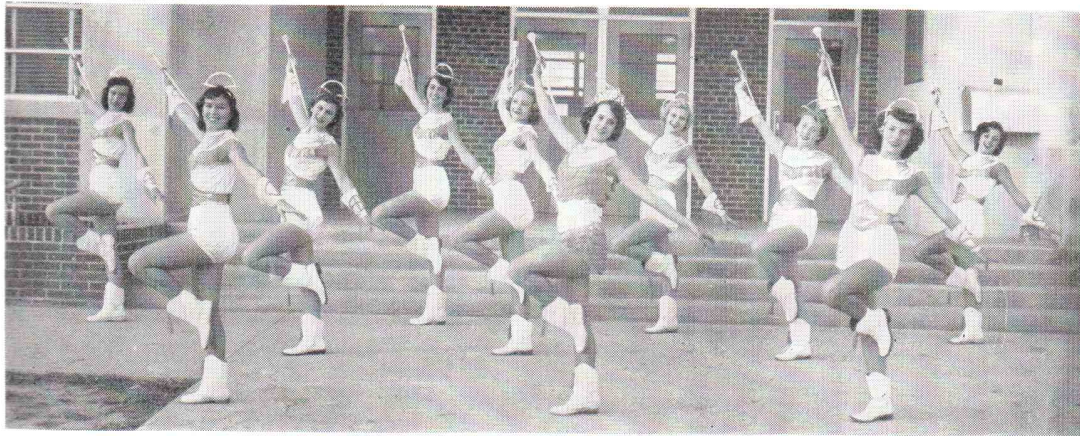
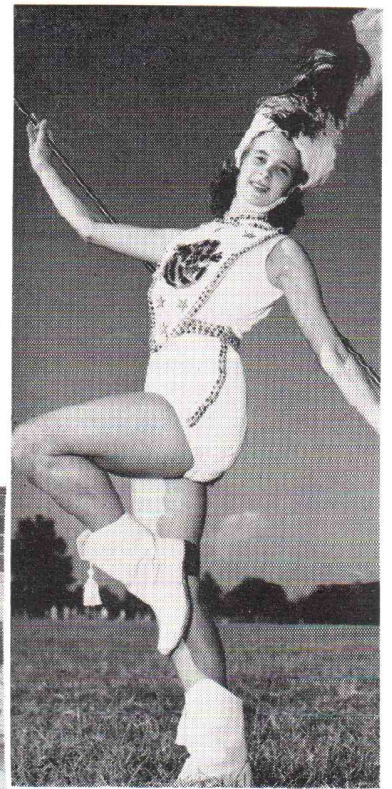
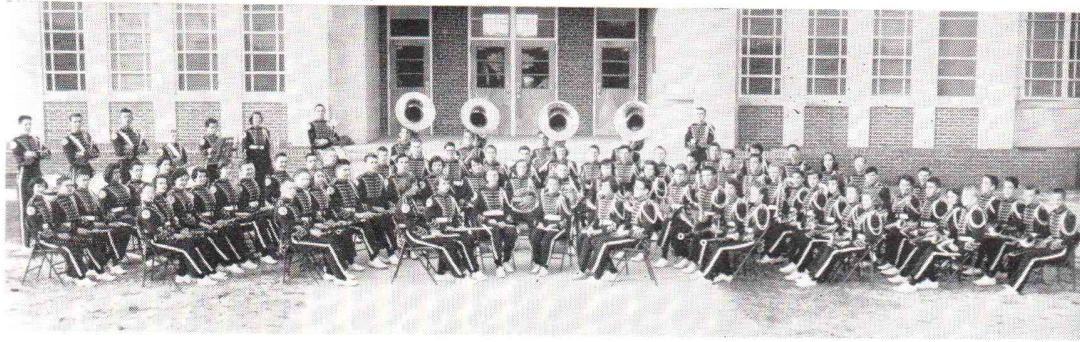




## PENSACOLA HIGH SCHOOL BAND

PENSACOLA, FLORIDA

H. Vernon Hooker, Director





*The Vogue*

**Welcome!**  
**BAND MEMBERS**

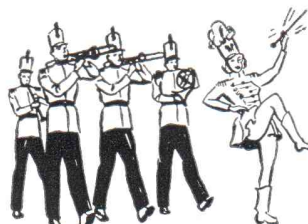
**VISIT TALLAHASSEE'S  
LEADING  
YOUNG MEN'S STORE**

**Alford Brothers**  
212 So. Monroe St.

*try our*  
**GOOD FOOD**  
*at reasonable prices*

**F. & T.**  
**Restaurant**

Next to Capital City National Bank



HAVE A WONDERFUL TIME!!!

REMEMBER US  
FOR YOUR PORTRAIT  
WHEN YOU RETURN TO F.S.U.

*Photography by Glen*

129 N. Monroe

Tallahassee, Fla.



# SEMINOLE HIGH SCHOOL BAND

SANFORD, FLORIDA

Ernest Cowley, Director

The Seminole High School Band was reorganized September, 1947 under the leadership of Bernard E. Black. In September, 1951 Ernest Cowley became director of the instrumental music department. The band has rapidly become known as a traveling band. This year it has traveled a total distance of 2,450 miles and has participated in ten parades.

Parading down Canal Street in New Orleans for the Rex Parade of Mardi Gras on March 2 of this year, the band was viewed many times through a national television hookup. It was one of eleven bands in this parade and was the only high school band attending the fabulous Rex Ball as guest of His Majesty King Rex, Lord of Misrule of New Orleans.

In April the band was given the distinction to present a special exhibition preceding the Festival of States Parade in St. Petersburg.

The director, Ernest Cowley, is a graduate of Stetson University. While at Stetson he was Captain of the Stetson Band and president of Kappa Kappa Psi. He is an instructor at the Miami University Summer Band Camp.

Much of the credit for the splendid spirit and success of the band is due to a very active Seminole High School Band Association.

## BAND ROSTER

George Anderson  
Ronnie Anderson  
Robert Armstrong  
Jim Brown  
Tommy Bower  
Rodman Brumley  
Larry Burney  
Byron Capehart  
Bill Crouch  
George Cross  
Mike Durak  
Joe Fisher  
Marvin Goembel  
Raymond Hardy  
Dickie Kendall

Wayne McCoy  
Frank Murphey  
Ernest Morris  
Robert Newsom  
Jim Owen  
Larry Payton  
Ronnie Robison  
Rob Reely  
Tommy Russel  
Leslie Smith  
J. D. Stone  
Philip Toney  
Henry Tooke  
Richard Tison  
Dick Worrell

Jack Thomas  
Faye Ashley  
Faye Beckham  
Sheila Browning  
Betty Bryan  
Marty Cameron  
Freeda Colbin  
Marilyn Calhoun  
Marty Cross  
Yvonne Cullen  
Grace Duggar  
Colleen Engebretson  
Rosemary Garner  
Olivia Giddens  
Gladys Hasty

Patsy Hought  
Barbara Lowe  
Sandra Lumpkin  
Peggy McClung  
Joyce Milam  
Carol Nutt  
Janie Oglesby  
Nancy Rountree  
Pat Rossman  
Grace Marie Stinecipher  
Pat Sykes  
Caye Stubbings  
Geraldine Wilkinson  
Betsy Westfall





when I  
think of  
SHOES  
I think  
of



*Strickland's*

...fashion in footwear  
115 E. College Ave.

*A Great Name  
in  
Clothing*



"SUITS  
THE  
SOUTH"

101 EAST COLLEGE AVENUE

**POWELL'S  
Little Folks Store  
INC.**

133 NORTH MONROE STREET

- JUVENILE FURNITURE
- TOYS
- NOVELTIES
- GIFTS
- HOBBIES

Dial 2-1146

Tallahassee, Florida

COMPLIMENTS OF

*Seven Seas*

318 SOUTH MONROE STREET

TALLAHASSEE, FLORIDA

GEO. A. GOURAS

JOHNNIE PATRONIS



# WASHINGTON COUNTY HIGH SCHOOL BAND

CHIPLEY, FLORIDA

M. C. Thompson, Director

The Chipley Band is an active musical organization that participates in school, civic and community activities.

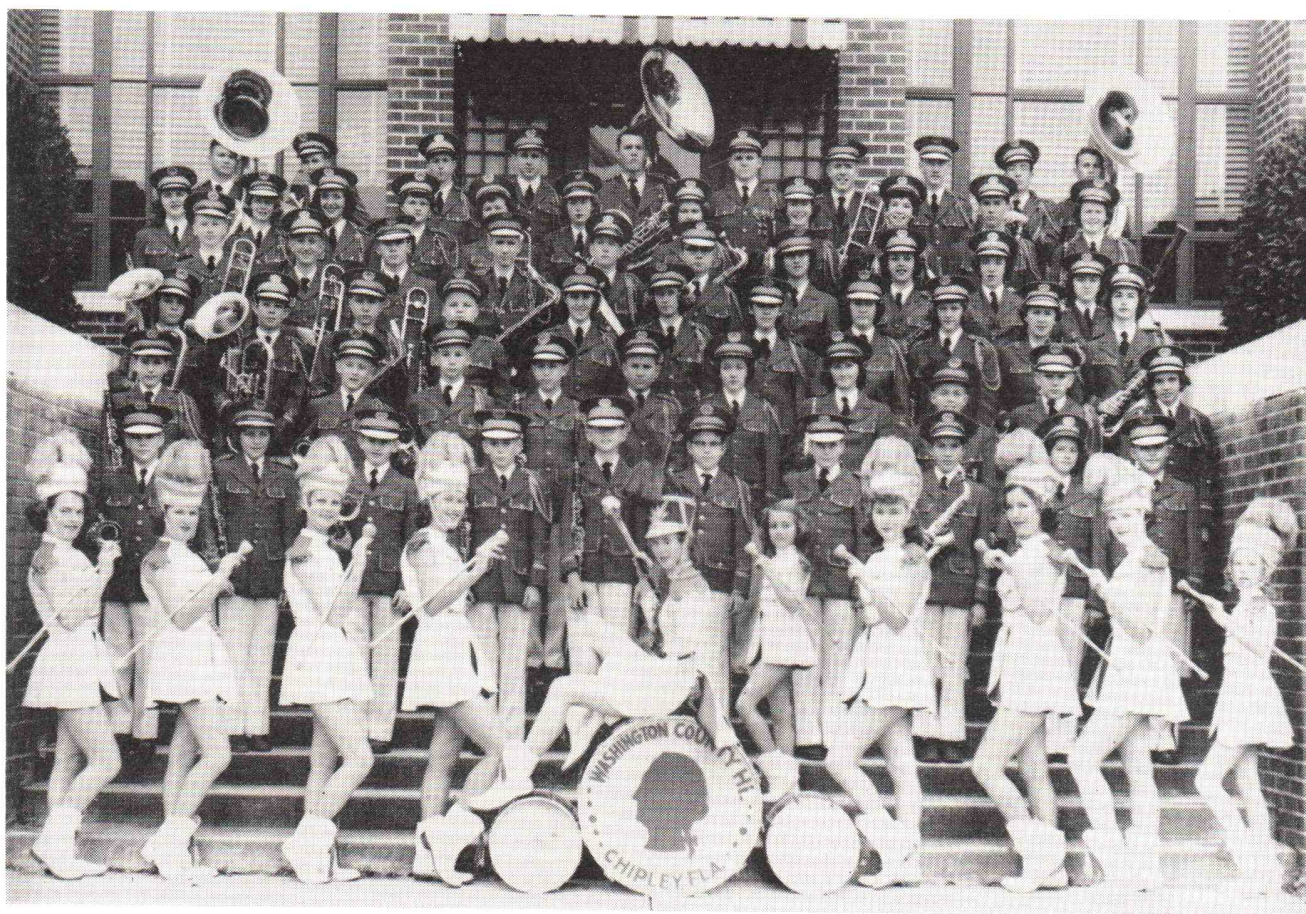
Out of town engagements this year included: the National Peanut Festival, Dothan, Ala.; Armistice Day Celebration, DeFuniak Springs, Fla.; Kiwanis Rodeo, Bonifay, Fla.; Egg Bowl Football Game, Graceville, Fla.; several out-of-town football games; and the Sixth District Band Festival, Tallahassee. The Chipley Band has participated in the State Festival for the last five years.

M. C. Thompson, Director of the Chipley Band, is completing his twelfth year in the Florida School Band field. He has been in the Chipley School for six years. His Chipley Band considers the Band Festivals "the two big events" of the school year.

## BAND ROSTER

|                     |                   |                    |                     |
|---------------------|-------------------|--------------------|---------------------|
| Roger Vanlandingham | Wesley Shoemaker  | J. B. Daniels      | Macky Thompson      |
| Garrie Smith        | Lyndal Sheffield  | Allen Cawthon      | Bobby Osburne       |
| Bobby Kittrell      | Janet May         | Jean Braxton       | Eddie Bowers        |
| Fritz Nystrum       | Charles Dunn      | Don Harrell        | Annie Pearl Locke   |
| Macky Reddoch       | Jeannette Kent    | Nell Sellers       | Rufus Watts         |
| Jimmie Huguen       | Ted Williams      | Wayne Sheffield    | Lillie Mae Harrell  |
| Calvin Sapp         | Danny Hasty       | Wilson Roberts     | Nan Godfrey         |
| Ronnie Bowers       | Jean Fowler       | Huey Walls         | Henrietta Van Vlake |
| Norma Jean Chancey  | Melinda Malloy    | Dow Gilmore        | Emma Lee Owens      |
| Martha Berry        | Betty Joyce Tharp | Chip Wood          | Richard McAdams     |
| Ray Davis           | Tommie Joe Parker | Lanell Cutts       | Maxine Hyatt        |
| Ruth Dickenson      | Tiny Griffin      | Evelyn Rooks       | Gladys Thompson     |
| Lynda Cawthon       | Millie Maddox     | Marie Sellers      | Oscar O'steen       |
| Johnny Rudd         | Lawrence Cutts    | David Sellers      | Jimmie Parker       |
| Eloise Bush         | Mary Bush         | Elmo Hudson        | Virginia Pelham     |
| Flo Alford          | Barbara Abbott    | Glenda Sue Gilbert | Evelyn Reynolds     |
| Mavis Peel          | Barbara Van Vlake | Charlotte Windsor  | Grace Haddan        |
| Lottie Merle Gay    | Annie Kirkland    | Mary Alford        | Lottie Lee Alford   |
| Margaret Hatfield   |                   |                    |                     |

OFFICERS—President, Roger Vanlandingham; Vice-President, Millie Maddox; Secretary, Nan Godfrey; Librarian, Lynda Cawthon; Reporter, Gladys Thompson.





**Say! Band Students . . .**

**Good Food and Cold  
Drinks Are Available  
Just Outside the South  
Gate of Dear Old F.S.U.**

**It's The  
Sweet Shop**

**701 W. Jefferson**

**"MEET AT THE SWEET"**

**YOU ARE INVITED**

**To Visit Our New Store  
And See The**

**1954 LINE OF**

- **Westinghouse Appliances**
- **Caloric Gas Ranges**
- **Amana Freezers**
- **Crosley Televisions**
- **Easy Washers and Dryers**

**Williams & Ervin**

**APPLIANCE COMPANY**

**304 South Monroe Street**

**Welcome To . . .**

**TALLAHASSEE'S NEWEST  
DRIVE-IN . . .**

- **Ranch Style Steakburgers**
- **Pit Bar-B-Q Beef and Pork**
- **Bar-B-Q Chicken**
- **Cold Drinks**

**Drive Out and See Us . . .  
The**

**ROUND-UP**

**DRIVE - IN**

**Phone 3-0445**

**1825 Thomasville Road**

**TALLAHASSEE'S FINEST**

**FLORIDA'S OLDEST**

**EXCLUSIVE LADIES' SHOE SHOP**

**MILLER'S  
Gootery**

**Since 1924**





## WEIRSDALE HIGH SCHOOL BAND

WEIRSDALE, FLORIDA

William Ledue, Director

One interesting fact in connection with the Weirsdale High School Band is that Weirsdale, located near Ocala, is the smallest high school in the state of Florida with a band, averaging around 41 senior high school students each year, according to records of the Florida Bandmasters' Association.

The band was reorganized in the early part of 1950 with a beginning group of 25. In the past four years the band has performed throughout the middle part of the state and has grown to its present enrollment of 60. It is participating in a State Band Contest for the first time.

### BAND ROSTER

#### FLUTES

Jo Ann Lee  
Judy Wimberly

#### OBOE

Driscoll Griggs

#### Bb CLARINETS

Patricia Denson  
Neal Dudley  
Diane Kelsey  
Lambert Lewis  
Necy Lewis  
Lassie MacDonald (1st Lt.)  
Betty Jane McDermitt  
Maxine Nichols  
Sylvia Nichols  
Patricia Peeples (Capt.)  
Rosamund Perry  
Janet Reynolds  
Jo Ann Reynolds  
Sandra Snowden  
Ann Spradlin  
Gladys Stephens

#### BASS CLARINET

Larry Holder

#### Eb ALTO SAXOPHONE

Jack Boerstler  
Alada Boyer  
John Scales

#### Bb TENOR SAXOPHONE

Bruce Perry

#### Bb CORNETS

Hypolite Balius  
Richard Balius  
John Boots  
Thomas Connell  
Jacquelyn Dyer  
David Graf  
Irma Holly

William Peeples

John Reitz  
Fred Spradlin (2nd Lt.)

#### Eb HORNS

Linda Procter  
George Smith  
Crystle Young

#### TROMBONES

John Martin  
Jack Parrish  
Philip Poucher  
Key Scales  
Bertha Jane Watts

#### BARITONE

Will Allan Laugesen

#### BASS

Willett Boyer

#### PERCUSSION

Neal Laugesen  
Jack MacDonald  
Fred Pruden  
Martha Reese  
William Threet  
Sylvia Wimberly

#### BELLS

Dell Boyer  
Joy Roberts

#### MAJORETTES

Fredericka Boyer  
Carol Davis  
Helen Douglas  
Mary Ann Garner  
Jo Ann Lee  
Lassie McDonald  
(Drum Major)  
Barbara Peacock



Welcome to  
**TALLAHASSEE ....!**

**Jenkins Music  
Company**

**123 South Monroe**

**Capital Camera**

For All Your  
Photographic Needs

**200 South Adams Street**

**Phone 2-4029**

**TALLAHASSEE, FLORIDA**

**Klemer Visual Service**

The Finest in Audio-Visual  
Equipment and Supplies

**200 South Adams Street**

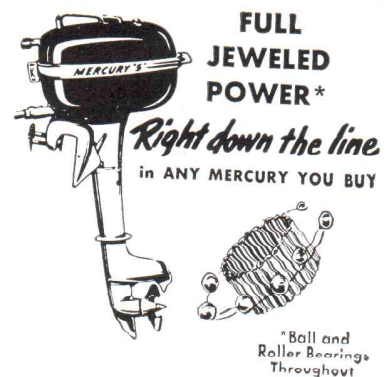
**TALLAHASSEE, FLORIDA**

*Annette's*

*113 East College Avenue*

*"The Store  
Where Quality Counts"*

**MERCURY MOTORS**



**FULL  
JEWELED  
POWER\***

*Right down the line*  
in ANY MERCURY YOU BUY

\*Ball and  
Roller Bearings  
Throughout

**Boats, Gator Trailers and Fishing Tackle**

For the Ultimate in Outboards Own a Mercury

**"SEEK IT FIRST AT"—  
218-220 S. Adams  
Ph. 2-4040**

**YON'S  
HARDWARE**



# **WILLISTON HIGH SCHOOL BAND**

**WILLISTON, FLORIDA**

**William Stark, Director**

The Williston High School Band was organized during the 1950-51 school year by its present conductor. Recently beginning its fourth year this band may be considered young both in experience and personnel with more than 75 per cent of the members in Junior High or Elementary school.

The director of the Williston Band, William J. Stark, is a graduate of Stetson University and Florida State University where he received a Master of Music Education degree in 1953.

## **BAND ROSTER**

### **FLUTES**

Caroline McDonnell  
Avaline Bostick

### **CLARINETS**

John Sapp  
Baker Brooks  
Danny Fletcher  
Carol Wise  
Leone Sapp  
Billie Sue McDonnell  
Carroll Sandlin  
Joe Smith  
Bill Sandlin  
Patricia Griffin  
Carl Pinkston

### **BASS CLARINET**

Gertrude Knight

### **ALTO SAXOPHONE**

Arlene Henderson  
Donna West

### **TENOR SAXOPHONE**

Eddy Dice

### **BARITONE SAXOPHONE**

Donnie Acree

### **CORNETS**

Bobby Sandlin  
Sheila Lee  
Bobby Bullard  
Alton Geiger  
Larry Moore  
Alan Brooks  
Davis Smith  
Carl Golden  
Franklin Chesser  
Glen Robinson

### **MELLOPHONES**

Madeline Courtney  
Ralph Avera  
Richard Fort

### **BARITONES**

Patt McCormick  
Leland Jordan

### **TROMBONES**

Lionel Robinson  
Allen Smith  
Larry Geiger

### **BASSES**

Edward Jordan  
Melvyn Courtney

### **PERCUSSION**

Shirley Hanna  
David Hipp  
Keith Petteway  
Jane Wright  
Bruce Smith

### **BELL LYRA**

Patsy Dice

### **MAJORETTES**

Gail Fugate  
(Head Majorette)  
Gayle Landrum  
Sheila Bowman  
Billie Earle Carter  
Valerie Davis  
Judith Gilley  
Sandra Lynn







## UNION HIGH SCHOOL BAND

LAKE BUTLER, FLORIDA

Lenvil H. Dicks, Director

The Union Band from Lake Butler bears the distinction of being one of the youngest (if not the youngest), bands participating in the State Contest. The band was organized by Miss Louise Gamble in September, 1950. The enrollment of the band fluctuated during the first two years that Miss Gamble directed it. Lenvil H. Dicks was named director in July of 1952, at which time the enrollment in the senior band was 16. At present the band numbers 32 pieces, with a junior subsidiary of 20 pieces.

This year marks the first time the band has entered any contest. A rating of superior was earned at the District V contest in Jacksonville. At the same time, out of a total of seven soloists and ensembles, all seven received superior ratings.

The enrollment of Union High School is 107. It is a rural consolidated school. All of the band members except ten are transported by school bus. We're country, and proud of it!

### BAND ROSTER

Kathryne Arnold  
Mary Virginia Bielling  
Carol Brown  
Jimmy Brown  
Frances Carroll  
Pete Carroll  
Edward Carter  
Mellaine Clyatt  
Verrell Clyatt  
Geraldine Crawford  
James Crawford

Ralph Crawford  
Fred Dale  
Marguerite Driggers  
Jimmy Douglass  
Hilda Dukes  
J. R. Dukes  
Marshall Dukes  
Barbara Forsythe  
Sue Fort  
Colin Halle  
Bucky Lewis

Donald Loadholtz  
J. R. McLeod  
Mary Etta Minshew  
Hilda Roberts  
Lattice Marie Rucker  
David Thomas  
Rodney Tucker  
Ellen Young  
Mazie Young  
Paul Young



# *Band Boosters Page . . . . .*

**We, the Following Firms and Individuals Welcome  
You to the Band Festival . . .**

**MAE'S SHOP**

213 South Monroe Street

**GRANT FURNITURE COMPANY**

125 South Monroe Street

**FAIN DRUG COMPANY**

119 South Monroe Street

**STEYERMAN'S**

118 South Monroe Street

**CHRISTIE'S KIDDIE KOTTAGE**

113 North Monroe Street

**DIANA SHOP**

124 South Monroe Street

**FAIRY TALE SHOP**

118½ South Monroe Street

**PAUL TURNER'S (Keepsake Diamonds)**

102 South Monroe Street

**THE BOOK CORNER**

100½ South Monroe Street

**BROWN'S MEN'S WEAR**

Corner Park and Adams Streets

**RAINEY CAWTHON'S**

Cor. North Monroe & Brevard Streets

**NIC'S TOGGERY**

For Men Who Walk in Style

**FLEET'S**

106 East Jefferson Street

**M and N CAFE**

119 East Jefferson Street

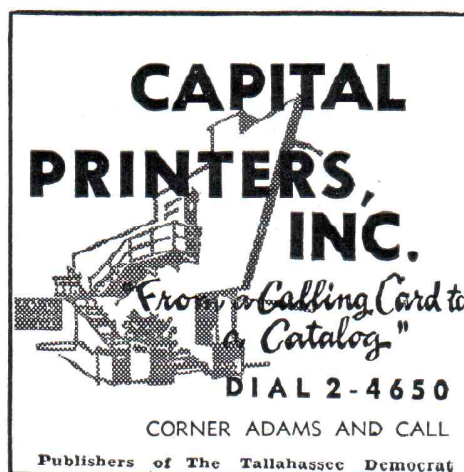
**GILBERG'S**

108 East Jefferson Street

**NELLY'S SHOP**

102 East College Avenue

Printed By



**CAPITAL  
PRINTERS,  
INC.**

*From a Calling Card to  
a Catalog.*

**DIAL 2-4650**

CORNER ADAMS AND CALL

Publishers of The Tallahassee Democrat

CAPITAL PRINTERS, INC. 





WESTCOTT BUILDING AT FLORIDA STATE UNIVERSITY IN TALLAHASSEE

*Center of Educational Tradition*